

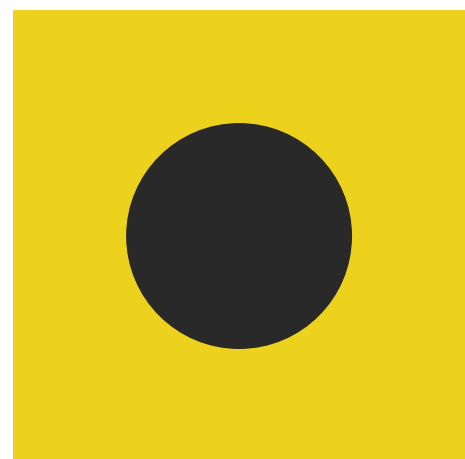


DIGITAL
COPY

SAILING INSTRUCTIONS

19 - 26 AUGUST

f @ t #HIRW #HAMILTONISLAND



Hamilton Island
Race Week 2023



CONTENTS

1. Rules	4
2. Aircraft Movements	4
3. Responsibility	4
4. Regatta Office and Notice Board	4
5. Pennants, Boom Stickers, Hull Decals and Identification Numbers	5
6. Signals Made Ashore	5
7. Notices to Competitors	5
8. Daily Reporting	5
9. Divisions and Class Flags	5
10. Courses and Marks of the Course	5
11. Race Committee Vessels	5
12. Schedule of Events	6
12.2 Starting Lines	9
13. Recalls	9
14. Shortening the Course	9
15. Alternative Penalties	9
16. Boats Not Finishing	9
17. The Finish	10
18. Time Limits	10
19. Protests	10
20. Arbitration	10
21. Handicaps and Scoring	11
22. Safety	11
23. Radio Communication	11
24. Race Results	11
25. Prizes	11
APPENDIX "A" - Courses and Mark Descriptions	12
APPENDIX "A" - Windward/Leeward Courses and Mark Descriptions	13
Course Maps	14
Nautilus Marine Insurance Courses	15
General Courses	17
Important Race Week Communications	28
Important Race Week Numbers	28
Tide Predictions	29
National Jury	29
Weather	29
Management Team	29
Whitsunday Tidal Flow	30
Shallow Water Warning Buoys	31
MSQ Notice to Mariners	32
Aircrafts on Approach to Hamilton	33
Media Notice for Sailors	34
Aircraft are Hazardous to Yachts	34
Yachts are Hazardous to Aircraft	34
Code Flags	35

Hamilton Island Yacht Club (HIYC) as the organising authority will conduct Hamilton Island Race Week 2023 on the waters of the Whitsunday Group from Sunday 20th to Saturday 26th August 2023.

1. Rules

- 1.1 The regatta will be governed by the rules as defined in the Racing Rules of Sailing (RRS) of World Sailing (WS), the Special Regulations of Australian Sailing (AS), the 2023 IRC rule (parts A, B & C) and AS prescriptions to the IRC rule, the 2022 ORC Rating System Rules, the Offshore Multihull Rule (OMR), where applicable including AS prescriptions, all as modified by these sailing instructions.
- 1.2 RRS 52 is changed to permit powered winches for boats over 14.0m LOA.
- 1.3 Boats not racing in an IRC Class (that allows variable and/or movable ballast) shall request permission from the race committee to use movable and/or variable ballast for the purpose of increasing stability. Any such request must be accompanied by full details of the system involved, and any such system will be considered in establishing the boat's handicap. Stored power may be used for the operation of movable ballast systems. RRS 51 and 52 are changed to the extent required by this paragraph.
- 1.4 Boats entered in the Non-Spinnaker division shall not carry spinnakers or code zero sails but may use a whisker-pole to pole out one headsail to windward. A headsail shall be fully hanked to the forestay or attached to a forestay by means of a luff groove device.
- 1.5 Nothing in the notice of race or sailing instructions relieve a boat of her responsibility under civil law to comply with the International Regulations for Preventing Collisions at Sea or local regulations.
- 1.6 Between sunset and sunrise, when a boat cannot determine with certainty what tack another boat is on, she shall keep clear of that boat. Competitors are reminded that part of the RRS definition of "room" includes considering the existing conditions (including visibility).
- 1.7 A current or fully amended paper chart AUS252 or Electronic Chart System (ECS) covering the sailing area shall be carried on board. All electronic chart data is to be downloaded to an ECS or available on a data storage device prior to starting and not dependent on internet or phone service connection.
- 1.8 The owner and skipper of all boats shall ensure that no entities form unauthorised associations between themselves (and their products or services) and the event (otherwise known as "ambush marketing") or any "hijack signage" is carried out, by or on behalf of themselves or their sponsors with reference to the event and that nothing else is done which might undermine the event, the rights of the event sponsor, or any other sponsor or participant in the event.
- 1.9 Before the first race of the regatta, all IRC rated boats in the Rating Division shall submit to the regatta office a declaration of all the sails carried on board for the duration of the regatta (IRC Rule 21.1.5(d)) and a Crew List Declaration on board for the duration of the regatta (AS prescription to IRC Rules 11.1 and 11.3).
- 1.10 In accordance with RRS 42.3(i), a boat may use her engine whilst racing:
 - (a) to avoid interfering with commercial traffic or aircraft operations.
 - (b) if she has run aground.
 - (c) to avoid running aground.
 - (d) to avoid a collision.

The engine use must be logged, and a declaration made at the regatta office as soon as possible after finishing.

The race committee will decide what action will be taken. Breaches of this rule may only be protested by the race committee. This alters RRS 60.1 and 60.3.

- 1.11 Boats shall not use 4G/5G Boosters or Signal Repeaters at any time including when not racing or within the Hamilton Island Marina or near vicinity.
- 1.12 Boats shall not use boat tracking, photography, or video for commercial purposes without prior written approval of the organising authority.
- 1.13 Unauthorised use of unmanned aerial vehicles ("UAV" aka "drone") anywhere on Hamilton Island and surrounding waters is prohibited at any time. Any boat associated with an unauthorised UAV will be liable to protest and the subsequent penalty shall be Disqualification Not Excludable (DNE).

2. Aircraft Movements (applies at all times including when not racing)

- 2.1 During aircraft movements, boats shall keep clear of the designated Dent Passage aircraft flight path zone as shown on Maritime Safety Queensland, Notice to Mariners 157 of 2019 and the height restrictions from the end of the runway.
- 2.2 During aircraft movements this area is deemed an obstruction in accordance with RRS definition, 'Obstruction'.
- 2.3 During aircraft movements the race committee may have marshal or race committee vessels in the vicinity of the designated Dent Passage aircraft flight path zone. Boats shall observe any directions given from the marshal or race committee vessels.
- 2.4 Marshal vessels may be identified by displaying a flag with a black letter "M". Race committee vessels may be identified by displaying a flag with black letters "RC".
Boats shall maintain a listening watch on the VHF race frequency when in the vicinity of Dent Passage for directions from the race committee.
- 2.5 Boats failing to comply with instructions from the race committee, marshal or race committee vessels may be protested by the race committee only. This alters RRS 60.1 and 60.3. The penalty for breaking this rule shall be Disqualification Not Excludable (DNE).

3. Responsibility

- 3.1 All those taking part in these races do so at their own risk and responsibility. Neither Hamilton Island Yacht Club Inc. nor any other club or company connected with the organising of these races is responsible for the seaworthiness of a boat whose entry is accepted, nor for the sufficiency or adequacy of its equipment. Owners shall accept full responsibility for the seaworthiness and safe navigation of their boats and competence of their crews.
- 3.2 Boat owners, skippers and crew should be aware that there may be uncharted obstacles under the waters on which races are held. Such uncharted obstacles include reefs, bomboras and rocks which could be a danger to boats and crews. Hamilton Island Yacht Club Inc. accepts no responsibility for any damage to or loss of any boat or for injury to, or death of, any crew person which may occur as a result of a collision with any underwater obstacle. All boats compete in races at their own risk.
- 3.3 Attention is drawn to Fundamental Rule 3, which states "The responsibility for a boat's decision to participate in a race or to continue racing is hers alone".

4. Regatta Office and Official Notice Board

The regatta office will be located on the top floor of the Hamilton Island Yacht Club (HIYC) building. The official notice board will be the online notice board located on the event website (<https://www.hamiltonislandraceweek.com.au/on-water-events>). Additionally, an electronic display may be in the foyer of HIYC and may also display official notices.

5. Pennants, Boom Stickers, Hull Decals and Identification Numbers

- 5.1 Backstay flags, sponsors flags, boom stickers and hull decals may be provided by the organising authority or event sponsors. If provided, flags shall be flown from the backstay, or conspicuously near the stern, at all times whilst racing, boom stickers shall be attached to the boom and hull decals shall be attached to the topsides approximately one metre from the bow. Boats failing to comply with this rule may only be protested by the race committee. This alters RRS 60.1 and 60.3.
- 5.2 Boats that do not have sail numbers or have sails with conflicting sail numbers, shall display a bow number, which will be provided. The bow number shall be located on both sides of the hull forward of any sponsors decals. This changes RRS 77.

6. Signals Made Ashore

- 6.1 Signals made ashore will be displayed from the flagpole located in the vicinity of the marina entrance signboard on the northern break-wall of the Hamilton Island Marina.
- 6.2 When a signal is displayed over a class flag, it shall apply to that class only.
- 6.3 6.3 When Code Flag "AP" (Answering Pennant) is flown ashore, with two sounds (one sound when lowered) means, "The race is postponed. The warning signal will be made not less than 30 minutes after this signal is lowered". (This changes RRS Race Signals "AP")

9. Divisions and Flags

Division	Class Flag and Backstay Flag
Rating Division 1	Gold
Rating Division 2	Gold/Black
Rating Division 3	Gold/White
Rating Division 4/Super40	Gold/Purple
Hamilton Island Blue Division	Light Blue
Hamilton Island Pink Division	Pink
Hamilton Island Yellow Division	Fluro Yellow
Hamilton Island Orange Division	Orange
Hamilton Island Purple Division	Purple
Trailer Yacht	Yellow/Blue
Non-Spinnaker	Grey
Hamilton Island Multihull Black Division	Black
Hamilton Island Multihull White Division	White

Boats shall fly the flag above any event sponsors pennant whilst racing and it shall be flown from the backstay or conspicuously from the stern for boats without a backstay.

10. Courses and Marks of the Course

See appendix "A".

7. Notices to Competitors

- 7.1 Notices to competitors will be posted on the official online notice board on the event website (<https://www.hamiltonislandraceweek.com.au/on-water-events>).
- 7.2 Any change to sailing instructions made ashore will be posted at least one hour before the race affected and the notice to competitors will be published on the official notice board and signalled by an SMS message to all boats. This changes RRS Race Signals "Other Signals".
- 7.3 Changes to the sailing instructions made afloat, or from the Dent Passage starting line during a scheduled start, will be indicated by the display of Code Flag 3rd Substitute accompanied by two sound signals. The change will be communicated orally on the designated course VHF channel or in writing by notice on the notice board or by SMS.

8. Daily Reporting

The race committee will contact each boat by SMS between 0830 hrs and 0900 hrs each race day. The SMS message will provide a boat specific Web link. Each yacht shall respond via the Web link within 90 minutes of her scheduled start indicating her intention to start and the number of Persons on Board (P.O.B.).

12. Schedule of Events

Date	Division	Event
Sunday 6th Aug	All divisions	Entries close
Friday 18th Aug	All divisions	Registration - 1400hrs to 1700hrs.
Saturday 19th Aug	All divisions	Registration - 1000hrs to 1630hrs.
Sunday 20th Aug	All divisions	Short Around-the-Islands Race
Monday 21st Aug	All divisions	Short Around-the-Islands Race
Tuesday 22nd Aug	Rating Division 1	Nautilus Marine Insurance Classic XL Race
	Rating Division 2	Nautilus Marine Insurance Classic Long Race
	Rating Divisions 3, 4/Super40 and Hamilton Island Blue Division	Nautilus Marine Insurance Classic Medium Distance Race
	All other divisions	Short Around-the-Islands Race
Wednesday 23rd Aug	All divisions	Lay day - shore side activities
Thursday 24th Aug	All divisions	Prix d'Elegance Parade 0930 - 1030
	Rating divisions (incl Super40)	2 x Short Races (Island or W/L)
	All other divisions	Short Around-the-Islands Race
Friday 25th Aug	All divisions	Short Around-the-Islands Race
Saturday 26th Aug	All divisions	Short Around-the-Islands Race
	Presentation of Trophies	

The race committee may make changes to this schedule at any time.

Sunday 20 August

Start Time	Division	Course	Starting Area	VHF
1045	Trailer Yacht	Island	Dent Passage	Ch 77
1050	Non-Spinnaker	Island	Dent Passage	Ch 77
1055	Hamilton Island Purple Division	Island	Dent Passage	Ch 77
1100	Hamilton Island Orange Division	Island	Dent Passage	Ch 77
1105	Hamilton Island Yellow Division	Island	Dent Passage	Ch 77
1110	Hamilton Island Pink Division	Island	Dent Passage	Ch 77

1120	Hamilton Island Multis White Div.	Island	Dent Passage	Ch 77
1125	Hamilton Island Multis Black Div.	Island	Dent Passage	Ch 77

1045	Rating Division 1	Island	Eastern	Ch 72
1050	Rating Division 2	Island	Eastern	Ch 72
1055	Rating Division 3	Island	Eastern	Ch 72
1100	Rating Division 4/Super40	Island	Eastern	Ch 72
1105	Hamilton Island Blue Division	Island	Eastern	Ch 72

Monday 21 August

Start Time	Division	Course	Starting Area	VHF
1050	Trailer Yacht	Island	Eastern	Ch 72
1055	Non-Spinnaker	Island	Eastern	Ch 72
1100	Hamilton Island Yellow Division	Island	Eastern	Ch 72
1105	Hamilton Island Orange Division	Island	Eastern	Ch 72
1110	Hamilton Island Purple Division	Island	Eastern	Ch 72
1115	Hamilton Island Pink Division	Island	Eastern	Ch 72
1120	Hamilton Island Multis White Div.	Island	Eastern	Ch 72
1125	Hamilton Island Multis Black Div.	Island	Eastern	Ch 72

1100	Hamilton Island Blue Division	Island	Dent Passage	Ch 77
1105	Rating Division 1	Island	Dent Passage	Ch 77
1110	Rating Division 2	Island	Dent Passage	Ch 77
1115	Rating Division 3	Island	Dent Passage	Ch 77
1120	Rating Division 4/Super40	Island	Dent Passage	Ch 77

Tuesday 22 August

Start Time	Division	Course	Starting Area	VHF
0945	Rating Division 1	XL Dist. Race	Dent Passage	Ch 77 & 81
0950	Rating Division 2	Long-Dist. Race	Dent Passage	Ch 77 & 81
0955	Rating Division 3	Medium-Dist. Race	Dent Passage	Ch 77 & 81
1000	Rating Division 4/Super40	Medium-Dist. Race	Dent Passage	Ch 77 & 81
1005	Hamilton Island Blue Div.	Medium-Dist. Race	Dent Passage	Ch 77 & 81

1115	Trailer Yacht	Island	Dent Passage	Ch 77
1120	Non-Spinnaker	Island	Dent Passage	Ch 77
1125	Hamilton Island Multis Black Div.	Island	Dent Passage	Ch 77
1130	Hamilton Island Multis White Div.	Island	Dent Passage	Ch 77
1135	Hamilton Island Purple Division	Island	Dent Passage	Ch 77
1140	Hamilton Island Orange Division	Island	Dent Passage	Ch 77
1145	Hamilton Island Yellow Division	Island	Dent Passage	Ch 77
1150	Hamilton Island Pink Division	Island	Dent Passage	Ch 77

Wednesday 23 August

Lay Day All Classes - On-Shore Activities.

Thursday 24 August

Start Time	Division	Course	Starting Area	VHF
0930 - 1030	Divisions - Prix d'Elegance Parade		Dent Passage	Ch 77
1100	Hamilton Island Yellow Division	Island	Dent Passage	Ch 77
1105	Hamilton Island Orange Division	Island	Dent Passage	Ch 77
1110	Hamilton Island Purple Division	Island	Dent Passage	Ch 77
1115	Hamilton Island Pink Division	Island	Dent Passage	Ch 77
1120	Non-Spinnaker	Island	Dent Passage	Ch 77
1125	Trailer Yacht	Island	Dent Passage	Ch 77
1130	Hamilton Island Multis White Div.	Island	Dent Passage	Ch 77

1130	Hamilton Island Blue Division	Island	Eastern	Ch 72
1135	Hamilton Island Multis Black Div.	Island	Eastern	Ch 72

1145	Rating Division 1	2 x short races	Eastern	Ch 72
1150	Rating Division 2	2 x short races	Eastern	Ch 72
1155	Rating Division 3	2 x short races	Eastern	Ch 72
1200	Rating Division 4/Super40	2 x short races	Eastern	Ch 72

For multiple races subsequent races will be held as soon as practicable after the completion of the previous race.

Friday 25 August

Start Time	Division	Course	Starting Area	VHF
1045	Hamilton Island Pink Division	Island	Eastern	Ch 72
1050	Hamilton Island Yellow Division	Island	Eastern	Ch 72
1055	Hamilton Island Orange Division	Island	Eastern	Ch 72
1000	Hamilton Island Purple Division	Island	Eastern	Ch 72
1105	Non-Spinnaker	Island	Eastern	Ch 72
1110	Hamilton Island Multis Black Div.	Island	Eastern	Ch 72
1115	Hamilton Island Multis White Div.	Island	Eastern	Ch 72
1120	Trailer Yacht	Island	Eastern	Ch 72

1030	Rating Division 1	Island	Dent Passage	Ch 77
1035	Rating Division 2	Island	Dent Passage	Ch 77
1040	Rating Division 3	Island	Dent Passage	Ch 77
1045	Rating Division 4/Super40	Island	Dent Passage	Ch 77
1050	Hamilton Island Blue Division	Island	Dent Passage	Ch 77

Saturday 26 August

Start Time	Division	Course	Starting Area	VHF
1030	Trailer Yacht	Island	Eastern	Ch 72
1035	Non-Spinnaker	Island	Dent Passage	Ch 77
1040	Hamilton Island Yellow Division	Island	Dent Passage	Ch 77
1045	Hamilton Island Orange Division	Island	Dent Passage	Ch 77
1050	Hamilton Island Purple Division	Island	Dent Passage	Ch 77
1055	Hamilton Island Pink Division	Island	Dent Passage	Ch 77
1100	Hamilton Island Multis White Div.	Island	Dent Passage	Ch 77
1105	Hamilton Island Multis Black Div.	Island	Dent Passage	Ch 77

1030	Rating Division 4/Super40	Island	Eastern	Ch 72
1035	Rating Division 3	Island	Eastern	Ch 72
1040	Rating Division 2	Island	Eastern	Ch 72
1045	Rating Division 1	Island	Eastern	Ch 72
1050	Hamilton Island Blue Division	Island	Eastern	Ch 72

12.2 Starting Lines

Dent Passage starting line. The starting line will be between the flagpole on the HIYC displaying the HIYC burgee, and a yellow inflatable buoy laid in Dent Passage.

The race committee may move the starting line to an on-water start in the vicinity of north Dent Passage. For an on-water Dent Passage start, the starting line will be between the signal mast displaying an orange flag on the race committee vessel, and a yellow inflatable buoy laid at some distance off its port side.

Eastern starting line. The starting line will be laid in the area between Catseye Bay and Craig Point to the North-East of Hamilton Island and will be between the signal mast displaying an orange flag on the race committee vessel and a yellow inflatable buoy laid at some distance off its port side.

Note: For all on-water starts, an inner limit buoy may be laid near the race committee vessel approximately on the starting line. Boats shall not pass between this buoy and the race committee vessel at any time. A breach of this rule is open to protest by the race committee only. This alters RRS 60.1 and 60.3.

13. Recalls

13.1 Following a general recall the new start will be five (5) minutes after the recalled start.

One minute after the recalled start the First Substitute will be lowered, the class flag(s) for the division to be re-started will be hoisted along with the preparatory signal. (This changes RRS 26, 29.2 and Race Signals "First Substitute")

13.2 Following a general recall the start(s) for the following division (s) will be delayed accordingly.

13.3 In addition to the requirements of RRS 29, the race committee MAY call boats on the designated course VHF channel.

13.4 For Dent Passage starts, a boat signalled as OCS and

attempting to return to start may, at the discretion of the race committee, have an additional 5 minutes or greater added to her elapsed time in lieu of returning to start correctly. If applied, this will be communicated by VHF or on the water by a race committee vessel as soon as possible. This changes RRS 28.1 and 29.1. A breach of this rule is open to protest by the race committee only. This alters RRS 60.1 and 60.3.

14. Shortening the Course

Courses may be shortened at any part of the course. Boats shall finish between the race committee vessel displaying code flag "S" and the inflatable mark moored nearby, or the nearest point of land if no mark is laid. This changes RRS 32 and Race Signals.

15. Alternative Penalties

15.1 For windward/leeward races the Two-Turns Penalty (RRS 44.1) is changed to a One-Turn Penalty.

15.2 For all Multihull races, the Two-Turns Penalty (RRS 44.1) is changed to a One-Turn Penalty.

16. Boats Not Finishing

Boats not finishing a race shall inform the race committee on the appropriate course VHF channel, or by calling the regatta office on 07 4946 8159.

17. The Finish

- 17.1 **Hamilton Island Yacht Club Finish Line.** The finish line will be in Dent Passage and will be between the flagpole on the HIYC displaying the HIYC burgee and a yellow inflatable buoy laid in Dent Passage. The finishing line may be illuminated during the hours of darkness at each end by flashing strobe lights. When crossing the finishing line during the hours of darkness boats shall illuminate their sail number or bow number and confirm her identify on the course VHF channel by radio.
- 17.2 **Golf course jetty finish line.** At any time, the race committee may instruct the fleet to use the golf course jetty finishing line. The finish line will be in Dent Passage and will be located to the southwest of the Hamilton Island Airport runway. Boats will finish between the yellow inflatable buoy at the eastern end of the line and either a staff displaying a blue flag on a race committee vessel anchored at the western end or if a finishing vessel is not on station, a flagstaff displaying a blue flag on the Dent Island golf course jetty (approx. S 20° 21.30', E 148° 56.31').
- 17.3 **Race committee vessel finish line.** The finish line will be in a similar position to the starting line or as designated in the course descriptions and will be between the signal mast displaying a blue flag on the race committee vessel and a yellow inflatable buoy moored nearby.

18. Time Limits

18.1

Course	Time Limit	Finishing Window
Windward/Leeward course	1.5 hours	30 minutes
Course 26	3 hours	45 minutes
Nautilus Marine Insurance XL & Long-Distance race	12 hours	0 minutes
Nautilus Marine Insurance Medium-Distance Race	9 hours	0 minutes
All other courses	6 hours or sunset (whichever is earlier)	90 minutes

- 18.2 The Finishing Window is the time for boats to finish after the first boat in the Division sails the course and finishes. A boat still racing when her finishing window expires will be scored points equal to the number of boats finishing within the time limit plus 25% of the number of starters in her division, rounded to the nearest whole number, but no more points than the number of starters. Such boats will be scored Time Limit Expired (TLE). This changes RRS 35, A4, A5 and A10. Prior to the time limit expiring, the race committee may offer the score of TLE to boats still racing that the RC consider may not make the time limit. This changes rule 28.1, 35, A4, A5 and A10.

19. Protests

- 19.1 A National Jury has been appointed and the right of appeal is denied in accordance with RRS 70.5 (b). A notice has been posted on the official notice board confirming the names of the Jury.
- 19.2 RRS 60.3 (a) (1) is changed by deleting the word "serious".

- 19.3 Protests shall be delivered to the regatta office within 1.5 hours after the finish time of the last boat in her division (or in the last race of the day when multiple races are conducted) or if the regatta office is closed at night, by 0900 hours the next day.
- 19.4 Protests will be heard as soon as practicable after racing. The jury room will be located on the top floor of the HIYC.
- 19.5 Notification of the details of protest hearings will be placed on the official notice board as soon as possible to inform competitors where and when there is a hearing in which they are parties to a protest or named as a witness. These notices are deemed to fulfil the requirements of RRS 63.2. Representatives of boats, who are parties to hearings, and their witnesses, are advised to remain on call in the vicinity of the regatta office (or such other place as directed by the jury secretary).
- 19.6 The jury may award a disqualification or a scoring penalty which may include no penalty. This changes RRS 64.2

20. Arbitration

- 20.1 Arbitration will be used in accordance with RRS Appendix "T".
- 20.2 The arbitrator may be a member of any subsequent jury or may give evidence to the jury.

21. Handicaps and Scoring

- 21.1 The scoring system shall be the Low Point System, RRS Appendix A except if there are five or less races sailed for a division then all races will count. One race will constitute a series in each division. The number of scheduled races and handicap system in each class is as follows:

Class	No. of Scheduled Races	Handicap System	Multiplier
Rating	7	IRC ORCi PHRF (Super 40)	Time Corrector (TCC) Time on Time (ToT) Time Corrector
Hamilton Island	6	Event Handicap (EHC) ORC	Time Correction Factor (TCF) Time on Time AP
Non-Spinnaker	6	Event Handicap (EHC)	Time Correction Factor (TCF)
Hamilton Island Multihull Incl. Multihull Racing	6	Event Handicap (EHC) & OMR	Time Correction Factor (TCF) & OMR Time Corrector
Trailer Yacht	6	Event Handicap (EHC)	Time Correction Factor (TCF)

- 21.2 Results will be calculated by the application of the appropriate class multiplier of elapsed time as shown in the table above. The boat with the lowest corrected time (after application of scoring penalties, if any) will be placed first and so on.
- 21.3 Performance Based Handicap TCF's (EHC & TCF) for each boat will be determined by the HIYC handicap committee and may be altered at any time. The decision of the handicap committee or their representative on any handicap matter will be final and will not be grounds for requests for redress. This alters RRS 60.1 (b).

22. Safety

- 22.1 The safety regulations will be the AS Special Regulations Part 1 for Category 5 races and they apply to all boats.
- 22.2 A boat may be inspected at any time for compliance with the Special Regulations or Rating Certificate.

23. Radio Communication

- 23.1 The following communications may be made by the race committee on VHF: time checks and starting times, starting order and designation of race areas, confirmation of any visual signal displayed, courses including bearing and distance to the first mark, change of course, shortening, postponement, abandonment and other information explaining the intentions of the race committee. The race committee may also transmit course and other information by Short Message Service (SMS).
- Delay in the broadcast of these calls, or the order in which they are made, or any omission or failure in the transmission or reception of these, will not be grounds for a request for redress by a boat. This changes RRS 60.1(b).
- 23.2 In accordance with SI 2.4 boats shall maintain a radio watch on the race frequency when in the vicinity of Dent Passage and shall comply with the directions given by the race committee, marshal, or race committee vessels. Refer SI 2.4.
- 23.3 XL Long-Distance Race and Long-Distance Race

During the Nautilus Classic XL Long-Distance Race and the Nautilus Classic Long-Distance Race, the leading boat in each class and the last boat in each class are requested to call the race committee (VHF Ch 81) as they round each major mark of the course. Mandatory position reporting radio schedules on VHF channel 81 will be conducted at 1803 hrs and 2103 hrs. Boats still racing will be called in alphabetical order at these times. Breaches of this rule may only be protested by the race committee. This alters rules 60.1 and 60.3.

24. Race Results

Results for each race will be posted on the event website (www.hamiltonislandraceweek.com.au) as soon as practicable after each race.

25. Prizes

- 25.1 Daily Prizes will be awarded for 1st, 2nd and 3rd on corrected time in each race for each division except if there are multiple races held for a division the day's totalled race scores will determine the winners. Daily Prizes will be presented on the main stage opposite the Marina Tavern at approximately 1730 hrs after racing each day. Divisions with less than six (6) boats may be awarded trophies for 1st place only.
- 25.2 At the conclusion of the regatta trophies will be awarded to 1st, 2nd and 3rd place in all divisions based on their overall points score. Divisions with less than six (6) boats will be awarded trophies for 1st place only.
- 25.3 In addition the following special awards will be made at the trophy presentation:
- Gun Boat Trophy for the boat which has the most line honours.
 - The Leon O'Donoghue Trophy for "Boat of the Week"
 - The Prix d'Elegance for the best-presented boat and crew.
 - The Prix d'Elegance for the best-themed boat and crew.
 - The Don McLean North Queensland Trophy for the best performing boat whose home port is between Bundaberg and Port Douglas.
- (The race committee will determine the winners of these special awards using whatever criteria they deem appropriate.)
- 25.4 Trophies will be presented at a ceremony on the evening of Saturday 26th August 2023 at the Convention Centre, Hamilton Island.

APPENDIX "A" COURSES AND MARK DESCRIPTIONS

A 1 For Dent Passage starts, the course will be broadcast on the course VHF channel as soon as practical after the warning signal for each division. Courses will also be posted on the official notice board each day. This changes RRS 27.1.

For on-water starts the course for each division will be signalled on a numeral board displayed from the race committee vessel. The course to be sailed may also be broadcast on the designated course VHF channel.

A 2 The following course descriptions list the order in which marks are to be passed and the side each mark is be rounded. Please note; marks denoted * are passing marks. If a mark is missing or out of position by more than 0.25 of a nautical mile, boats shall round the charted position of the missing mark.

A 3 The approximate position given is the pinnacle of the island or rock designated as a mark of the course. Marks designated as Laid Marks will be white cube inflatable buoys.

A 4 All Passage Courses starting in the Eastern Starting Area may have a white inflatable windward mark laid at approximately 0.8 nm - 1.75 nm from the starting line as the first rounding mark of the course. The direction of rounding the mark will be indicated from near the bow of the race committee vessel - green flag for starboard rounding, red flag for port rounding. If no signal is made the mark is deleted from the course.

Mark	Position
Ann Island	Approx S 20° 25.22', E 149° 01.01'
Baynham Island	Approx S 20° 26.17', E 149° 06.16'
Cole Island	Approx S 20° 25.51', E 149° 00.45'
Condor Laid Mark	Approx S 20° 14.48', E 148° 54.60'
Coppersmith Rock	Approx S 20° 35.92', E 149° 07.01'
Dead Dog Island	Approx S 20° 32.85', E 149° 07.57'
Daydream Island	Approx S 20° 15.44', E 148° 48.86'
Denman Island	Approx S 20° 16.93', E 148° 50.98'
Dent Island	Approx S 20° 20.95', E 148° 55.85'
Dent Laid Mark	Approx S 20° 20.36', E 148° 56.51'
Dungurra Island	Approx. S 20° 21.55', E 148° 59.82'
Fairlight Rock	Approx S 20° 32.93', E 149° 07.99'
Fitzalan Island	Approx S 20° 19.85', E 148° 57.62'
Hamilton Island	Approx S 20° 20.98', E 148° 58.46'
Henning Island	Approx S 20° 19.38', E 148° 55.63'
Isolated Rock	Approx S 20° 24.35', E 149° 00.39'
Lindeman Island	Approx S 20° 26.74', E 149° 02.78'
Mansell Island	Approx S 20° 28.27', E 149° 07.62'
Mid Molle Island	Approx S 20° 14.80', E 148° 49.86'
North Molle Island	Approx S 20° 13.62', E 148° 49.29'
Pentecost Island	Approx S 20° 23.81', E 149° 01.79'
Pine Island	Approx S 20° 22.63', E 148° 53.44'
Sidney Island	Approx S 20° 26.99', E 149° 00.56'
South Molle Island	Approx S 20° 16.47', E 148° 50.24'
Spitfire Laid Mark	Approx S 20° 28.70', E 149° 01.60'
St Helen Rock	Approx S 20° 33.20', E 149° 04.68'
Thomas Island	Approx S 20° 32.84', E 149° 06.75'
Wirrainbeia Island	Approx S 20° 13.95', E 149° 08.60'
White Rock	Approx S 20° 18.13', E 148° 48.61'
Yellow Special Purpose Mark 1	Approx S 20° 17.83', E 148° 55.00'
Yellow Special Purpose Mark 2	Approx S 20° 18.80', E 148° 56.05'

APPENDIX "A" WINDWARD / LEEWARD COURSES AND MARK DESCRIPTIONS

A 5 The following course descriptions lists the order in which marks are to be passed and the side each mark is be rounded.

A 6 The course to be sailed for each division will be signalled by a numeral board displayed from the race committee vessel. The course to be sailed may also be broadcast on the designated course VHF Channel.

A 7 A board displaying the approximate compass bearing from the race committee vessel to Mark 1 and Mark 2 will be displayed from the race committee vessel.

A 8 Mark 1 and Mark 2 will be laid to windward of the starting line.

The gate will be laid approximately 50 metres to windward of the starting line. (Note: The gate may be laid after the starting signal).

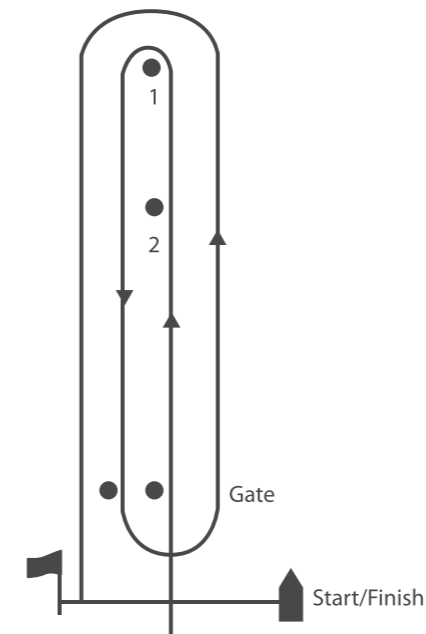
A 9 All marks to PORT except the gate. Either gate marks may be rounded to port or to starboard after passing through the gate from the direction of the last mark. If only one gate mark is set, boats shall round that mark to port.

A 10 For a change of course direction or length of one leg the race committee will move the original mark (or marks or finishing line) or will lay a new mark (or marks) identical to the original at the new position. Any subsequent marks may be relocated to maintain the original course configuration.

A 11 Mark 2 will only be laid if required.

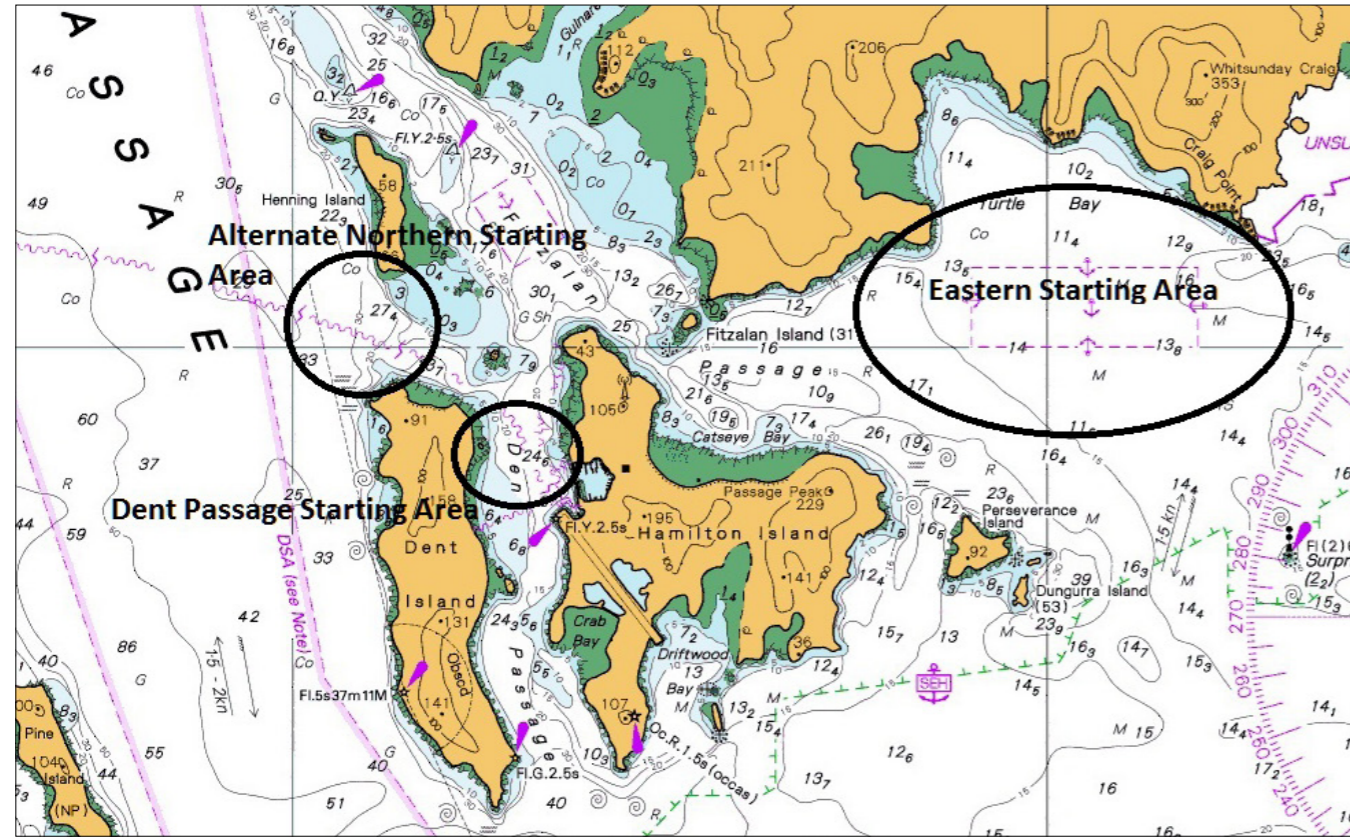
Course Mark	Mark Description
Start / Finish Mark	Yellow inflatable buoy
Mark 1	Yellow inflatable buoy
Mark 2	White inflatable buoy
Gate	White inflatable buoys

Course Signal	Course to Sail
1	Start - 1 - Finish
2	Start - 1 - Gate - 1 - Finish
3	Start - 1 - Gate - 1 - Gate - 1 - Finish
4	Start - 2 - Finish
5	Start - 2 - Gate - 2 - Finish
6	Start - 2 - Gate - 2 - Gate - 2 - Finish

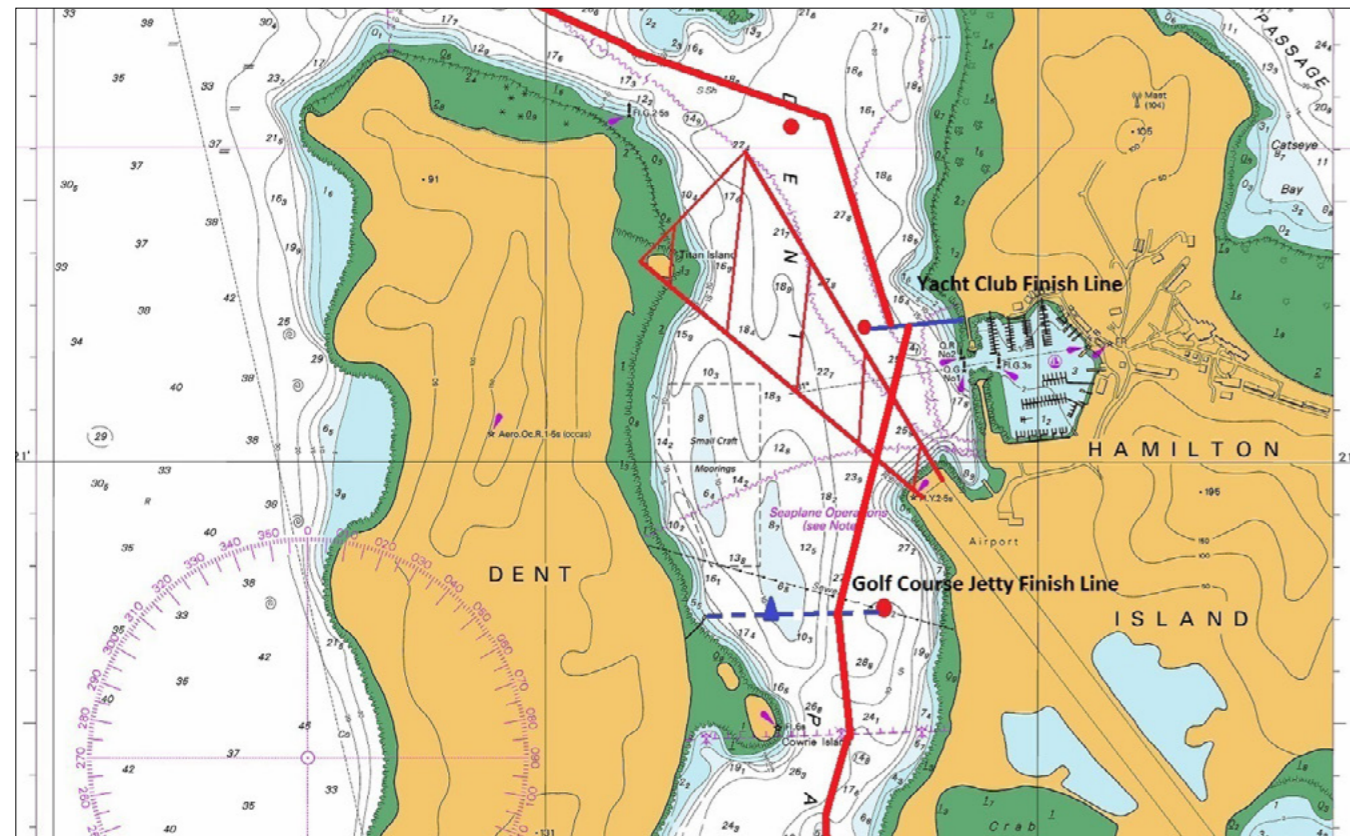


Course Maps

Starting Areas

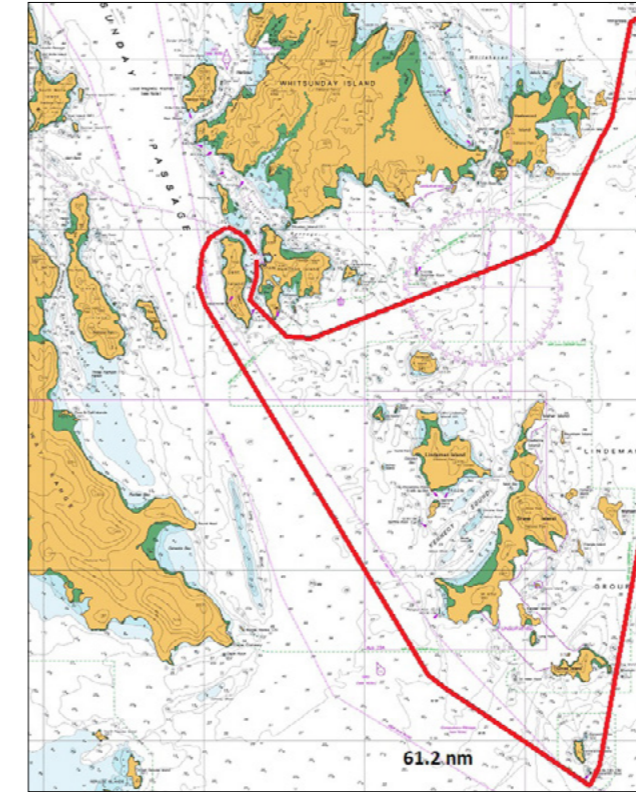


Dent Passage Finish



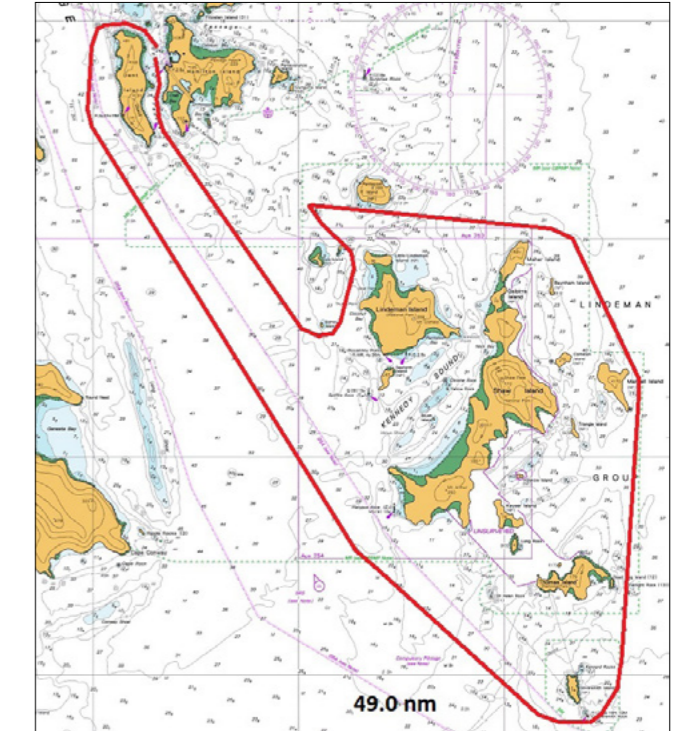
Course Maps

Nautilus Marine Insurance Classic XL Long Race
- Rating Division 1
62.2 nm approx.



Course Mark	Required Side
Starting line	Dent Passage in a northerly direction
Dent Island	Port
Coppersmith Rock	Port
Dead Dog Island*	Port
Fairlight Rock*	Starboard
Mansell Island	Port
Wirrainbeia Island	Port
Hamilton Island	Starboard
Finishing Line	Dent Passage in a northerly direction

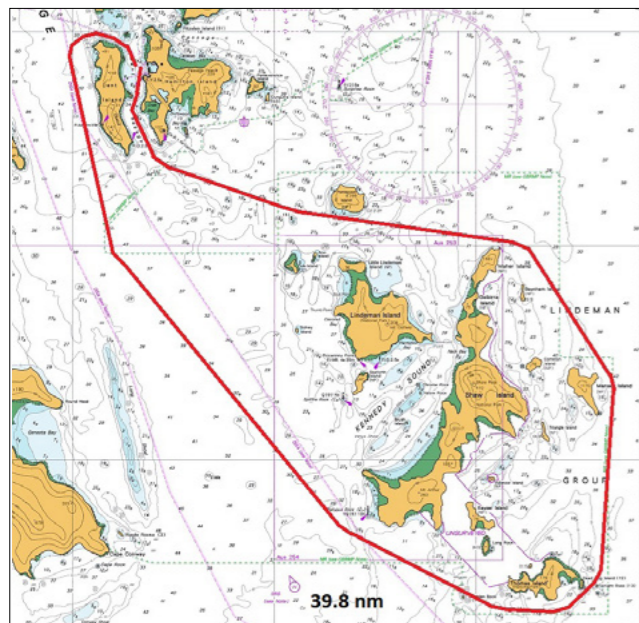
Nautilus Marine Insurance Classic Long Race
- Rating Division 2
49.0 nm approx.



Course Mark	Required Side
Starting line	Dent Passage in a northerly direction
Dent Island	Port
Coppersmith Rock	Port
Dead Dog Island*	Port
Fairlight Rock*	Starboard
Mansell Island	Port
Isolated Rock	Port
Ann Island	Starboard
Sidney Island	Starboard
Finishing Line	Dent Passage in a northerly direction

Course Maps

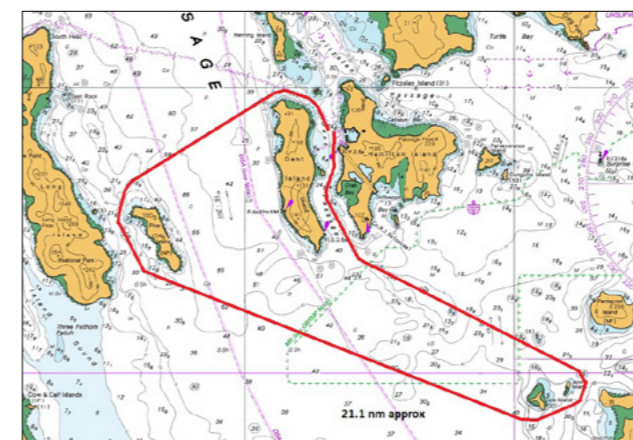
Nautilus Marine Insurance Classic Medium-Distance Race
- Rating Division 3, 4/Super40 & Hamilton Island Blue Division
 39.8 nm approx.



Course Mark	Required Side
Starting line	Dent Passage in a northerly direction
Dent Island	Port
St Helen Rock	Port
Thomas Island	Port
Dead Dog Island	Port
Fairlight Rock*	Starboard
Mansell Island	Port
Pentecost Island	Starboard
Finishing Line	Dent Passage in a northerly direction

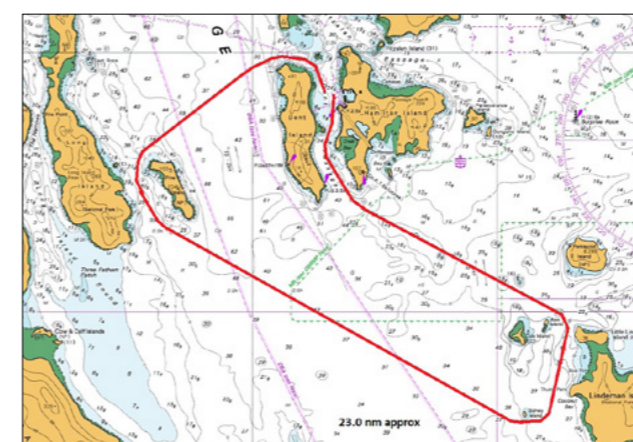
All other races use the following General Courses

Course 1
 21.1 nm approx.



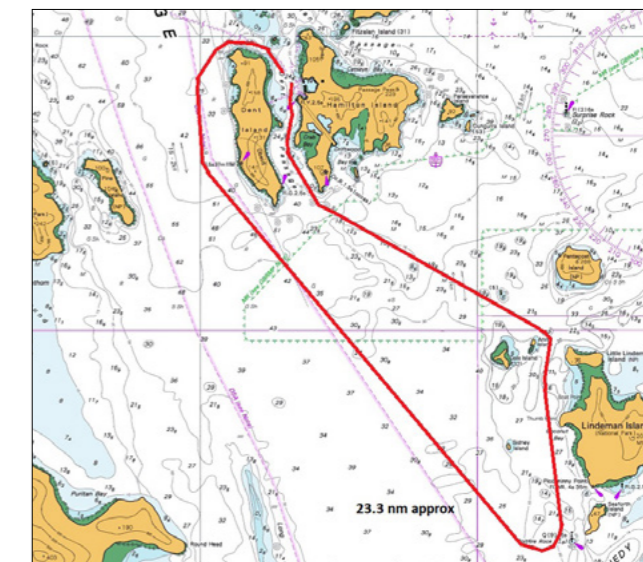
Course Mark	Required Side
Starting line	Dent Passage in a northerly direction
Dent Island	Port
Pine Island	Port
Cole Island	Port
Ann Island	Port
Finishing Line	Dent Passage in a northerly direction

Course 2
 23.0 nm approx.



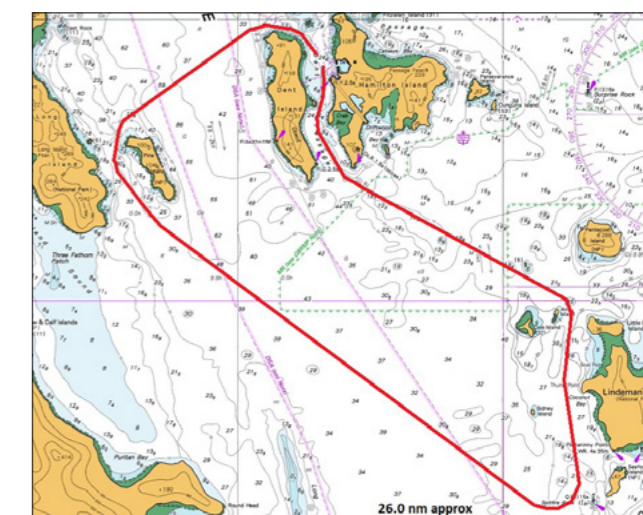
Course Mark	Required Side
Starting line	Dent Passage in a northerly direction
Dent Island	Port
Pine Island	Port
Sidney Island	Port
Ann Island	Port
Finishing Line	Dent Passage in a northerly direction

Course 3
 23.3 nm approx.



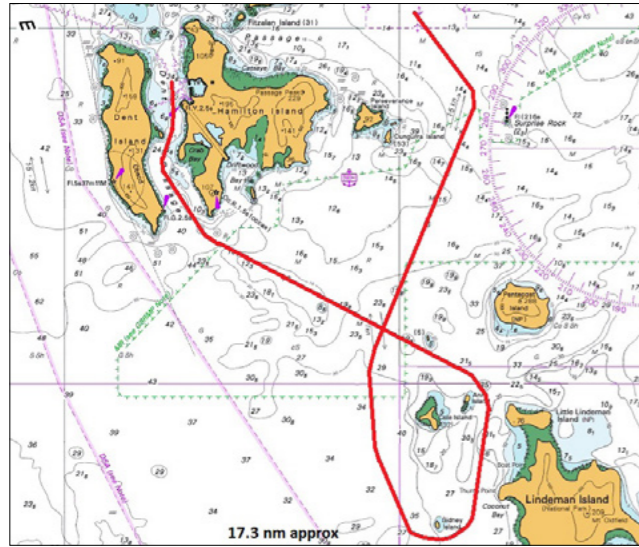
Course Mark	Required Side
Starting line	Dent Passage in a northerly direction
Dent Island	Port
Spitfire Laid Mark	Port
Ann Island	Port
Finishing Line	Dent Passage in a northerly direction

Course 4
 26.0 nm approx.



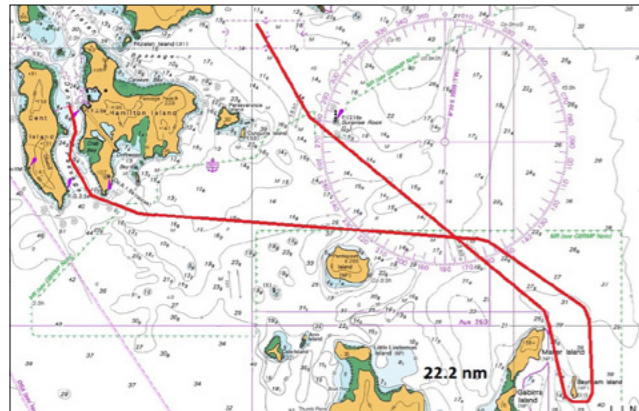
Course Mark	Required Side
Starting line	Dent Passage in a northerly direction
Dent Island	Port
Pine Island	Port
Spitfire Laid mark	Port
Ann Island	Port
Finishing Line	Dent Passage in a northerly direction

Course 5
17.3 nm approx.



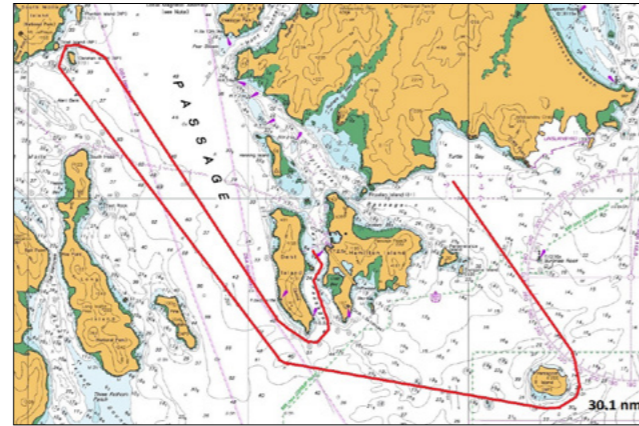
Course Mark	Required Side
Starting line	Eastern Starting Line
Laid Mark	As described in A 4
Cole Island	Port
Sidney Island	Port
Ann Island	Port
Finishing Line	Dent Passage in a northerly direction

Course 6
22.2 nm approx.



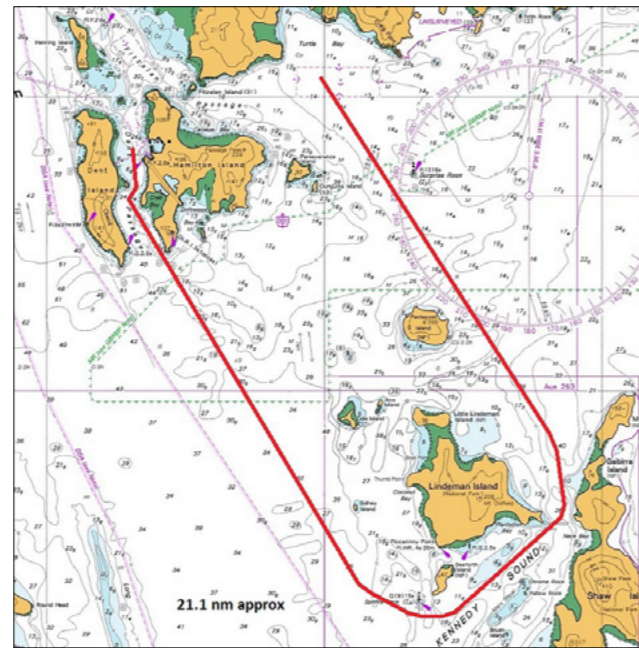
Course Mark	Required Side
Starting line	Eastern Starting Line
Laid Mark	As described in A 4
Baynham Island	Port
Hamilton Island	Starboard
Finishing Line	Dent Passage in a northerly direction

Course 7
30.1 nm approx.



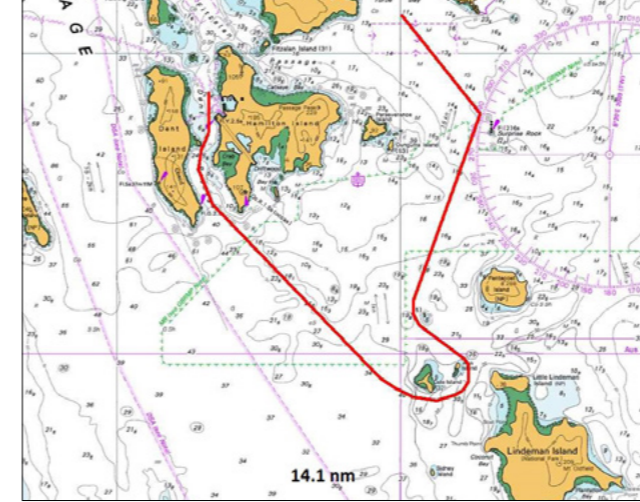
Course Mark	Required Side
Starting line	Eastern Starting Line
Laid Mark	As described in A 4
Pentecost Island	Starboard
Denman Island	Starboard
Dent Island	Port
Finishing Line	Dent Passage in a northerly direction

Course 8
21.1 nm approx.



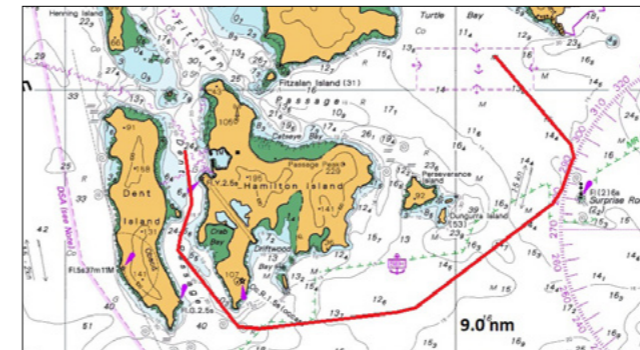
Course Mark	Required Side
Starting line	Eastern Starting Line
Laid Mark	As described in A 4
Lindeman Island	Starboard
Spitfire Laid Mark	Starboard
Finishing Line	Dent Passage in a northerly direction

Course 9
14.1 nm approx.



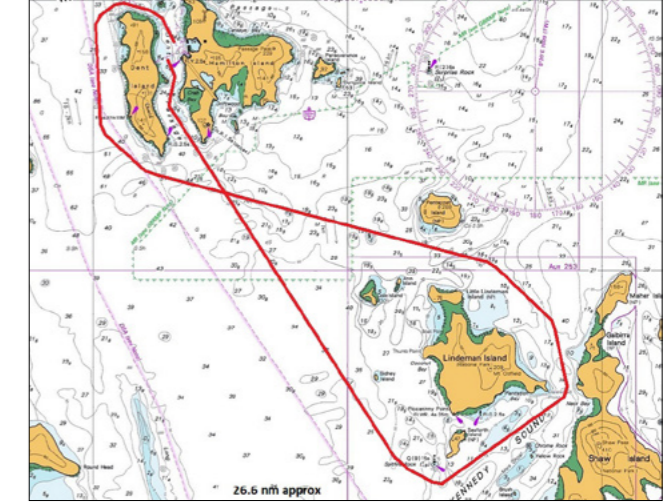
Course Mark	Required Side
Starting line	Eastern Starting Line
Laid Mark	As described in A 4
Isolated Rock	Port
Ann Island	Starboard
Cole Island	Starboard
Finishing Line	Dent Passage in a northerly direction

Course 10
9.0 nm approx.



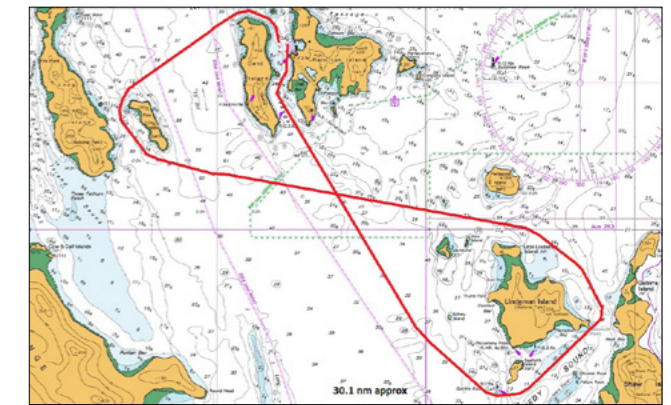
Course Mark	Required Side
Starting line	Eastern Starting Line
Laid Mark	As described in A 4
Dungurra Island*	Starboard
Hamilton Island	Starboard
Finishing Line	Dent Passage in a northerly direction

Course 11
26.6 nm approx.



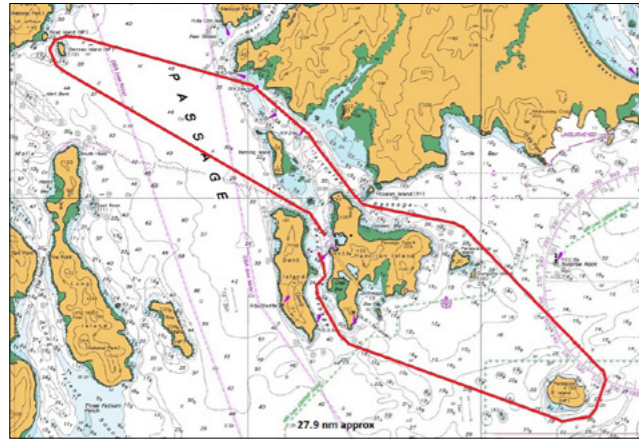
Course Mark	Required Side
Starting line	Dent Passage in a northerly direction
Dent Island	Port
Lindeman Island	Starboard
Spitfire Laid Mark	Starboard
Finishing Line	Dent Passage in a northerly direction

Course 12
30.1 nm approx.



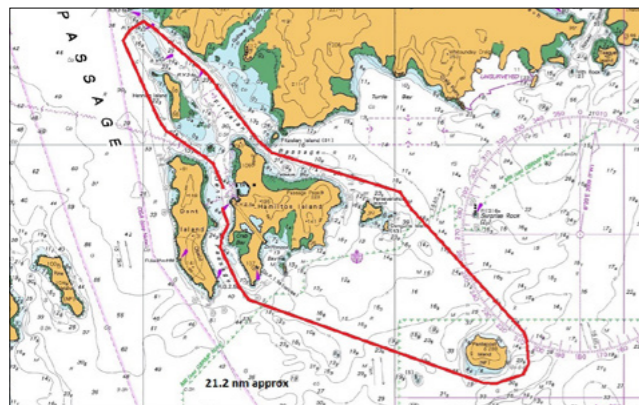
Course Mark	Required Side
Starting line	Dent Passage in a northerly direction
Dent Island	Port
Pine Island	Port
Lindeman Island	Starboard
Spitfire Laid Mark	Starboard
Finishing Line	Dent Passage in a northerly direction

Course 13
27.9 nm approx.



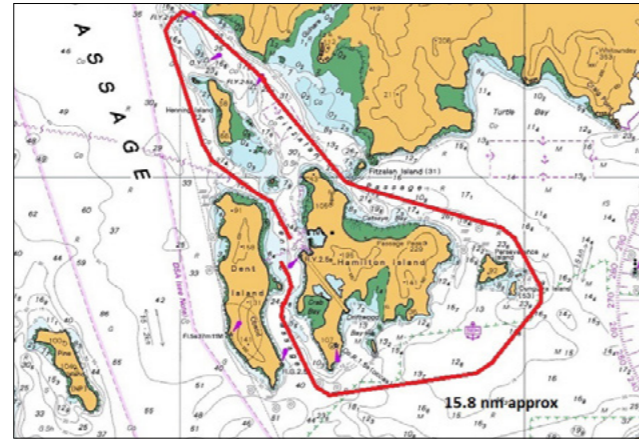
Course Mark	Required Side
Starting line	Dent Passage in a northerly direction
Dent Island	Port
Denman Island	Starboard
Yellow Special Purpose Mark 1	Starboard
Yellow Special Purpose Mark 2	Starboard
Fitzalan Island	Port
Dungurra Island*	Starboard
Pentecost Island	Starboard
Finishing Line	Dent Passage in a northerly direction

Course 14
21.2 nm approx.



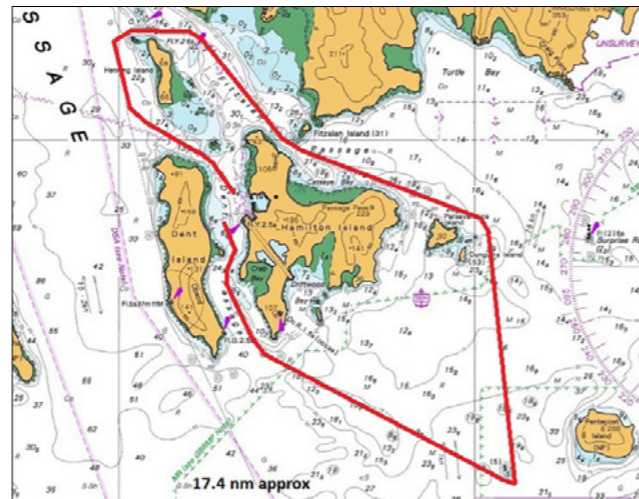
Course Mark	Required Side
Starting line	Dent Passage in a northerly direction
Dent Island	Port
Yellow Special Purpose Mark 1	Starboard
Yellow Special Purpose Mark 2	Starboard
Fitzalan Island	Port
Dungurra Island*	Starboard
Pentecost Island	Starboard
Finishing Line	Dent Passage in a northerly direction

Course 15
15.8 nm approx.



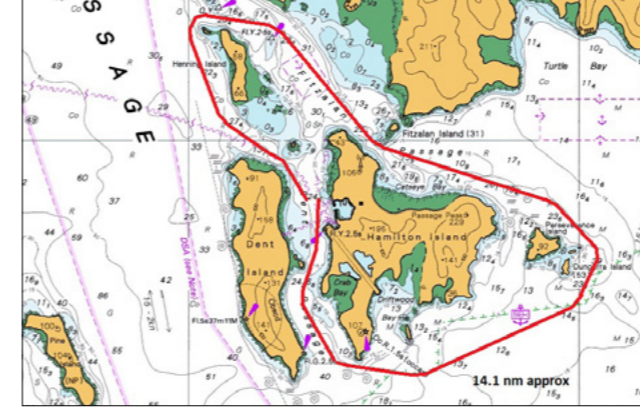
Course Mark	Required Side
Starting line	Dent Passage in a northerly direction
Dent Island	Port
Yellow Special Purpose Mark 1	Starboard
Yellow Special Purpose Mark 2	Starboard
Fitzalan Island	Port
Dungurra Island	Starboard
Hamilton Island	Starboard
Finishing Line	Dent Passage in a northerly direction

Course 16
17.4 nm approx.



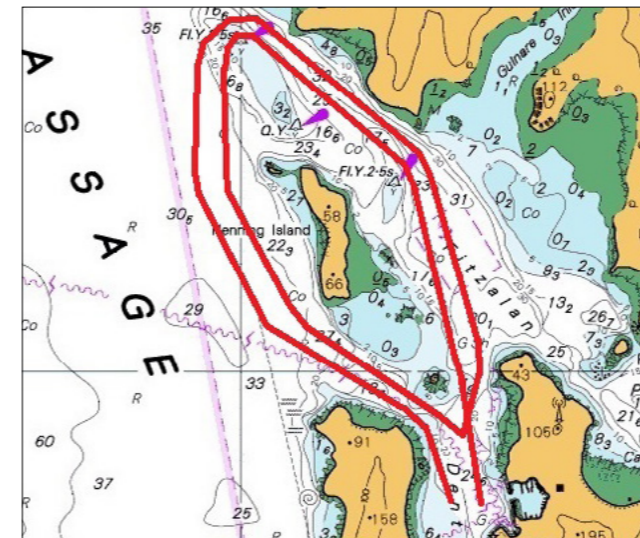
Course Mark	Required Side
Starting line	Dent Passage in a northerly direction
Henning Island	Starboard
Yellow Special Purpose Mark 2	Starboard
Fitzalan Island	Port
Dungurra Island	Starboard
Isolated Rock	Starboard
Finishing Line	Dent Passage in a northerly direction

Course 17
14.1 nm approx.



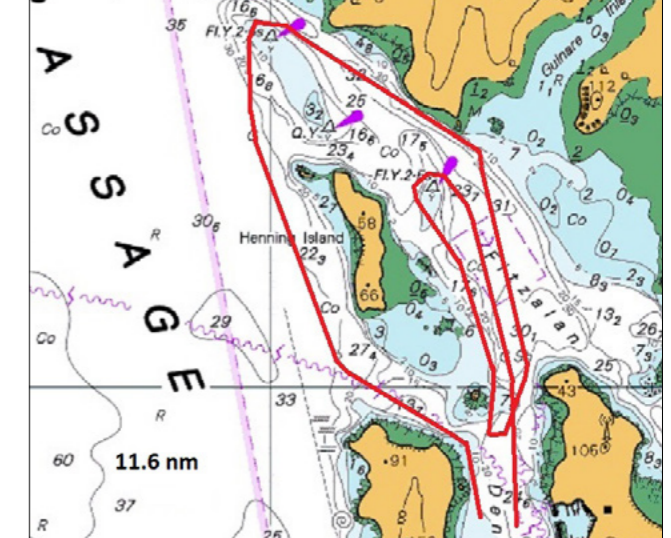
Course Mark	Required Side
Starting line	Dent Passage in a northerly direction
Henning Island	Starboard
Yellow Special Purpose Mark 2	Starboard
Fitzalan Island	Port
Dungurra Island	Starboard
Hamilton Island	Starboard
Finishing Line	Dent Passage in a northerly direction

Course 18
13.6 nm approx.



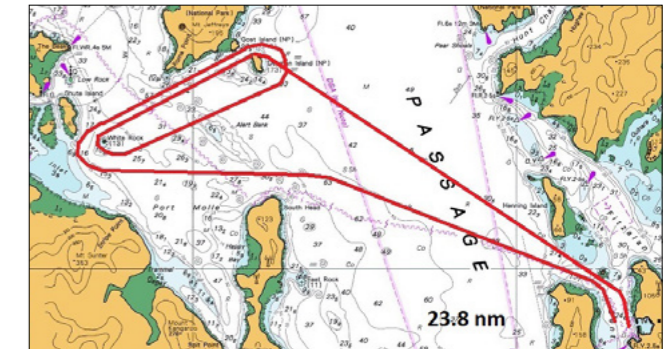
Course Mark	Required Side
Starting line	Dent Passage in a northerly direction
Henning Island	Starboard
Yellow Special Mark 1	Starboard
Yellow Special Mark 2	Starboard
Dent Laid Mark	Starboard
Henning Island	Starboard
Yellow Special Mark 1	Starboard
Yellow Special Mark 2	Starboard
Dent Laid Mark*	Starboard
Finishing Line	Dent Passage in a southerly direction

Course 19
11.6 nm approx.



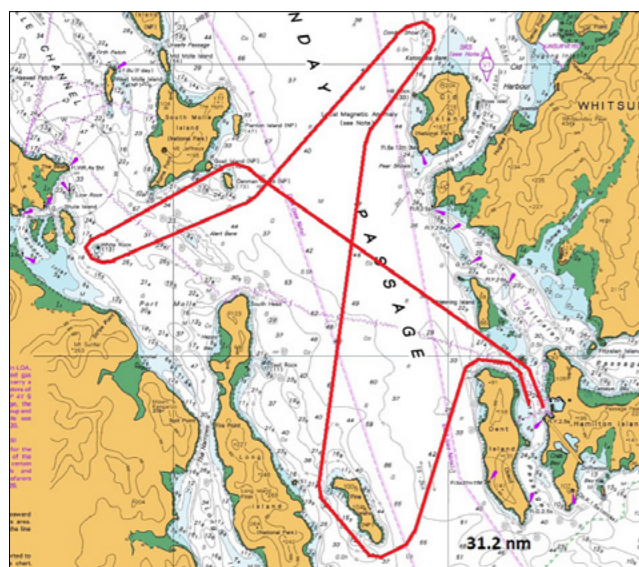
Course Mark	Required Side
Starting line	Dent Passage in a northerly direction
Henning Island	Starboard
Yellow Special Mark 1	Starboard
Yellow Special Mark 2	Starboard
Dent Laid Mark	Starboard
Yellow Special Mark 2	Starboard
Dent Laid Mark*	Starboard
Finishing Line	Dent Passage in a southerly direction

Course 20
23.8 nm approx.



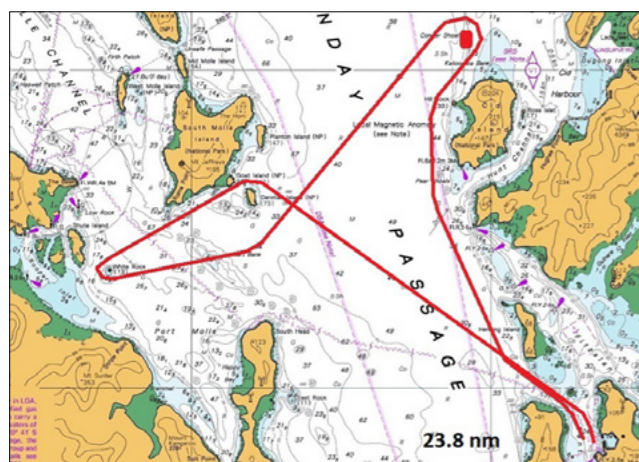
Course Mark	Required Side
Starting line	Dent Passage in a northerly direction
Dent Island	Port
White Rock	Starboard
Denman Island	Starboard
White Rock	Starboard
Denman Island	Starboard
Dent Laid Mark	Starboard
Finishing Line	Dent Passage in a southerly direction

Course 21
31.2 nm approx.



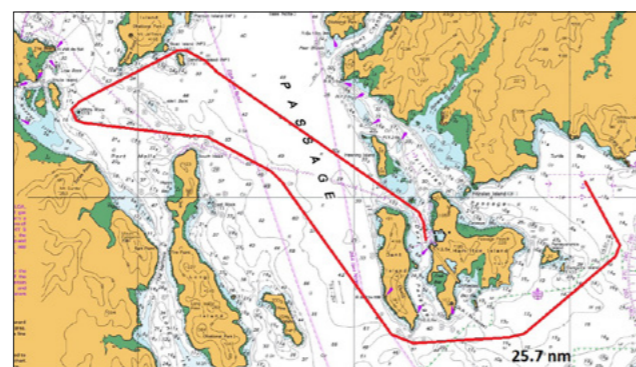
Course Mark	Required Side
Starting line	Dent Passage in a northerly direction
Dent Island	Port
Pine Island	Starboard
Condor Laid Mark	Port
Denman Island	Starboard
White Rock	Starboard
Denman Island	Starboard
Dent Laid Mark	Starboard
Finishing Line	Dent Passage in a southerly direction

Course 22
23.8 nm approx.



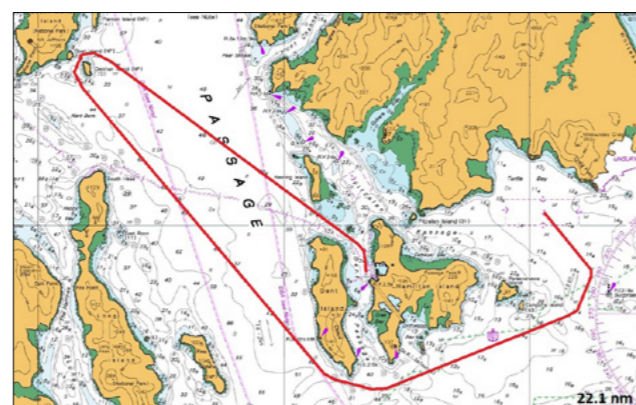
Course Mark	Required Side
Starting line	Dent Passage in a northerly direction
Dent Island	Port
Condor Laid Mark	Port
Denman Island	Starboard
White Rock	Starboard
Denman Island	Starboard
Dent Laid Mark	Starboard
Finishing Line	Dent Passage in a southerly direction

Course 23
25.7 nm approx.



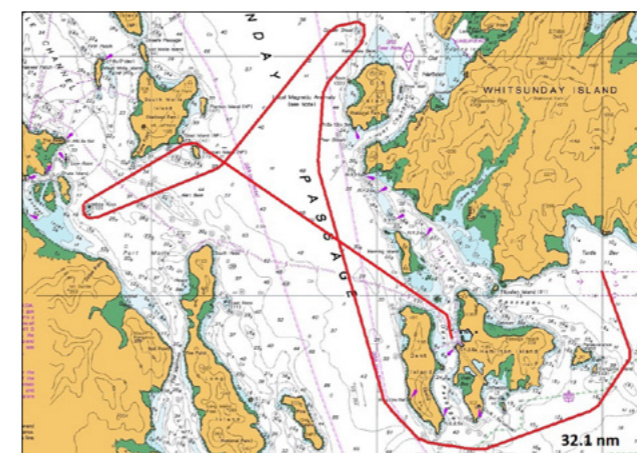
Course Mark	Required Side
Starting line	Eastern Starting Line
Laid Mark	As described in A 4
Dent Island	Starboard
White Rock	Starboard
Denman Island	Starboard
Dent Laid Mark	Starboard
Finishing Line	Dent Passage in a southerly direction

Course 24
22.1 nm approx.



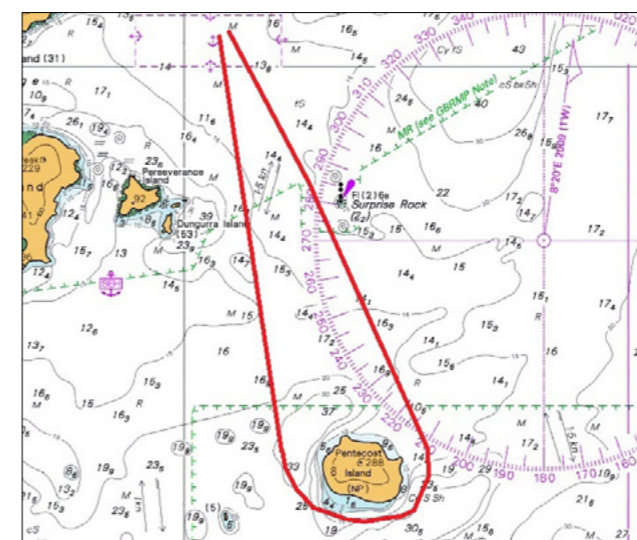
Course Mark	Required Side
Starting line	Eastern Starting Line
Laid Mark	As described in A 4
Dent Island	Starboard
Denman Island	Starboard
Dent Laid Mark	Starboard
Finishing Line	Dent Passage in a southerly direction

Course 25
32.1 nm approx.



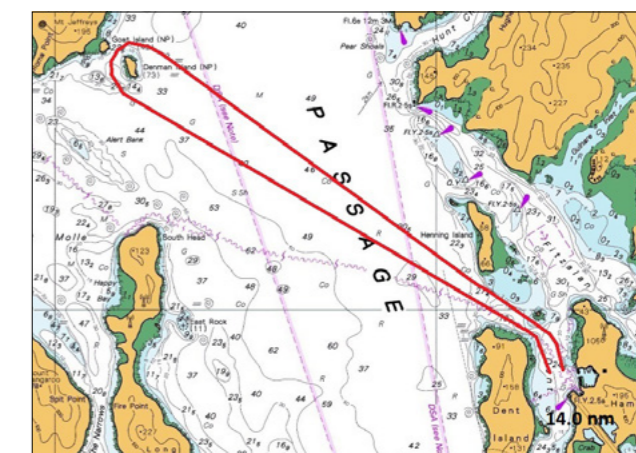
Course Mark	Required Side
Starting line	Eastern Starting Line
Laid Mark	As described in A 4
Dent Island	Starboard
Condor Laid Mark	Port
Denman Island	Starboard
White Rock	Starboard
Denman Island	Starboard
Dent Laid Mark	Starboard
Finishing Line	Dent Passage in a southerly direction

Course 26
10.5 nm approx.



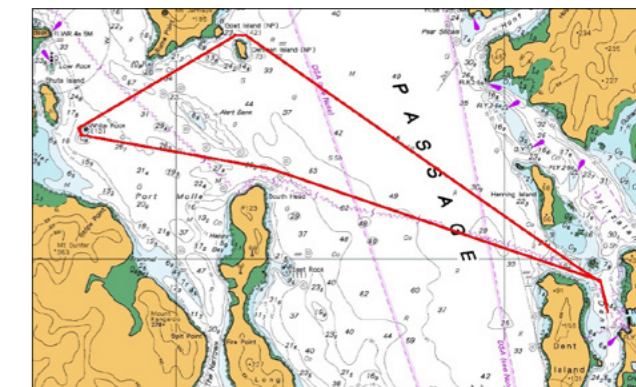
Course Mark	Required Side
Starting line	Eastern Starting Line
Laid Mark	As described in A 4
Pentecost Island	Starboard
Finishing Line	Race committee vessel as per 17.3

Course 27
14.0 nm approx.



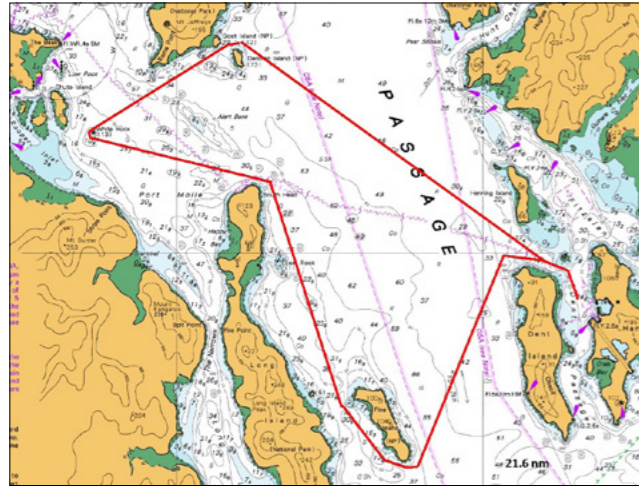
Course Mark	Required Side
Starting line	Dent Passage in a northerly direction
Dent Island	Port
Denman Island	Starboard
Dent Laid Mark	Starboard
Finishing Line	Dent Passage in a southerly direction

Course 28
17.8 nm approx.



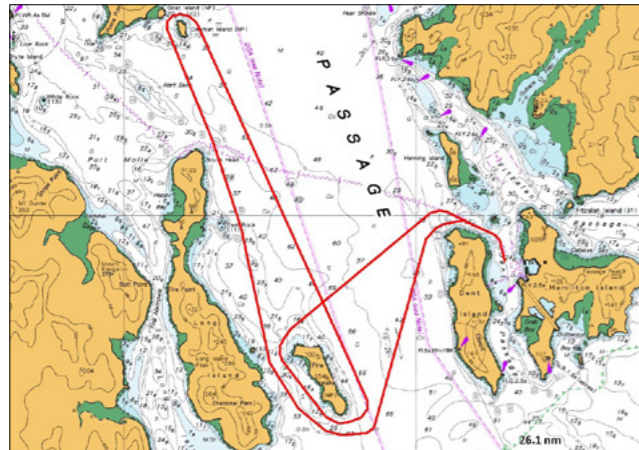
Course Mark	Required Side
Starting line	Dent Passage in a northerly direction
Dent Island	Port
White Rock	Starboard
Denman Island	Starboard
Dent Laid Mark	Starboard
Finishing Line	Dent Passage in a southerly direction

Course 29
21.6 nm approx.



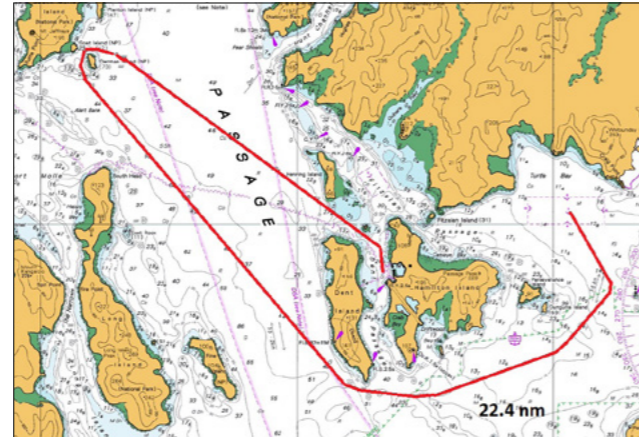
Course Mark	Required Side
Starting line	Dent Passage in a northerly direction
Dent Island	Port
Pine Island	Starboard
White Rock	Starboard
Denman Island	Starboard
Dent Laid Mark	Starboard
Finishing Line	Dent Passage in a southerly direction

Course 30
26.1 nm approx.



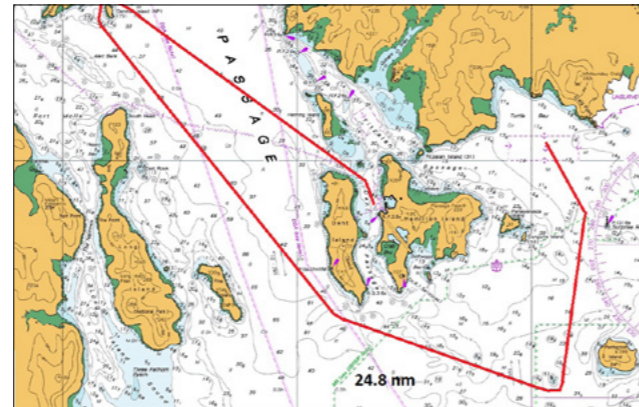
Course Mark	Required Side
Starting line	Dent Passage in a northerly direction
Dent Island	Port
Pine Island	Starboard
Denman Island	Starboard
Pine Island	Starboard
Dent Laid Mark	Starboard
Finishing Line	Dent Passage in a southerly direction

Course 31
22.4 nm approx.



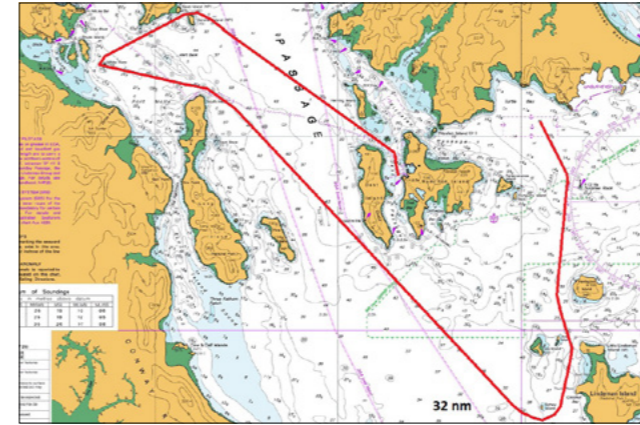
Course Mark	Required Side
Starting line	Eastern Starting Line
Laid Mark	As described in A 4
Dent Island	Starboard
Denman Island	Starboard
Dent Laid Mark	Starboard
Finishing Line	Dent Passage in a southerly direction

Course 32
24.8 nm approx.



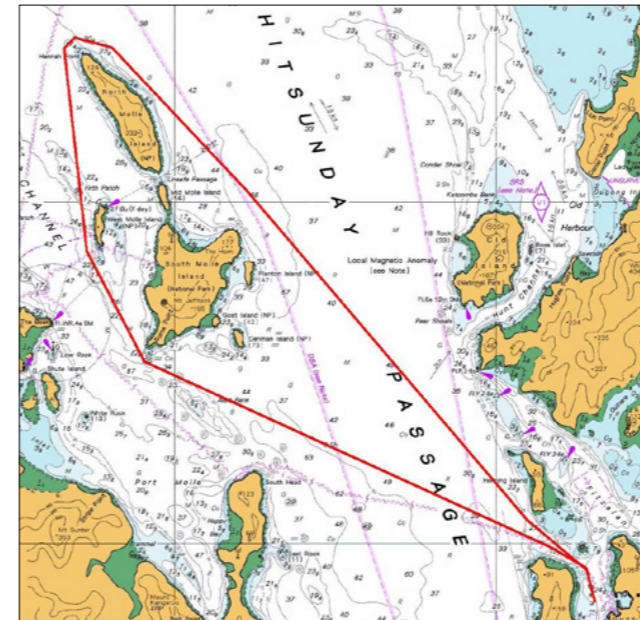
Course Mark	Required Side
Starting line	Eastern Starting Line
Laid Mark	As described in A 4
Isolated Rock	Starboard
Dent Island	Starboard
Denman Island	Starboard
Dent Laid Mark	Starboard
Finishing Line	Dent Passage in a southerly direction

Course 33
32.0 nm approx.



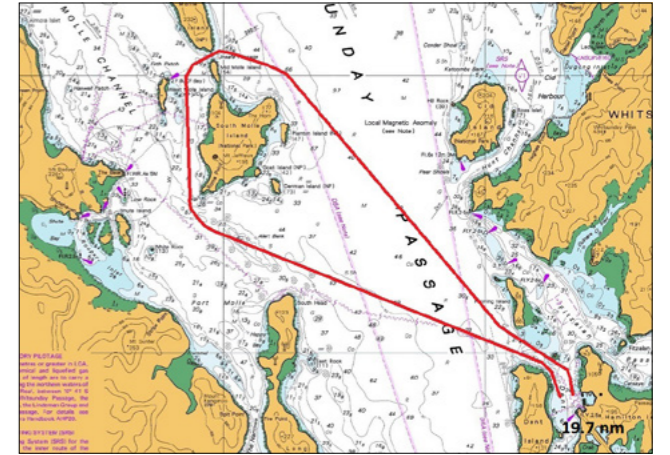
Course Mark	Required Side
Starting line	Eastern Starting Line
Laid Mark	As described in A 4
Sidney Island	Starboard
White Rock	Starboard
Denman Island	Starboard
Dent Laid Mark	Starboard
Finishing Line	Dent Passage in a southerly direction

Course 34
24.2 nm approx.



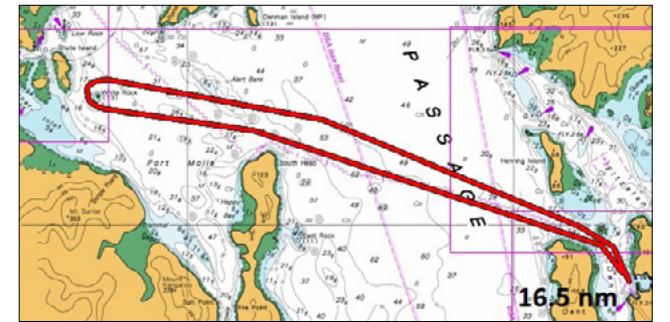
Course Mark	Required Side
Starting line	Dent Passage in a northerly direction
South Molle Island	Starboard
North Molle Island	Starboard
Dent Laid Mark	Starboard
Finishing Line	Dent Passage in a southerly direction

Course 35
19.7 nm approx.



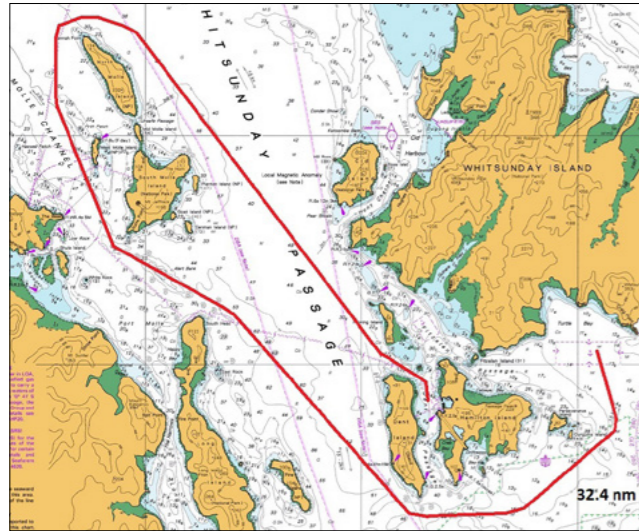
Course Mark	Required Side
Starting line	Dent Passage in a northerly direction
South Molle Island	Starboard
Mid Molle Island	Starboard
Dent Laid Mark	Starboard
Finishing Line	Dent Passage in a southerly direction

Course 36
16.5 nm approx.



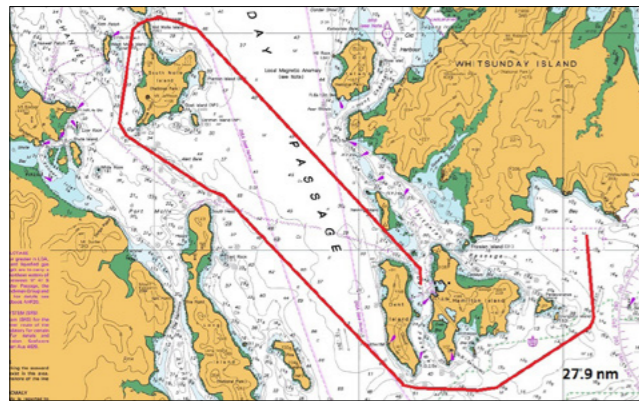
Course Mark	Required Side
Starting line	Dent Passage in a northerly direction
White Rock	Starboard
Dent Laid Mark	Starboard
Finishing Line	Dent Passage in a southerly direction

Course 37
32.4 nm approx.



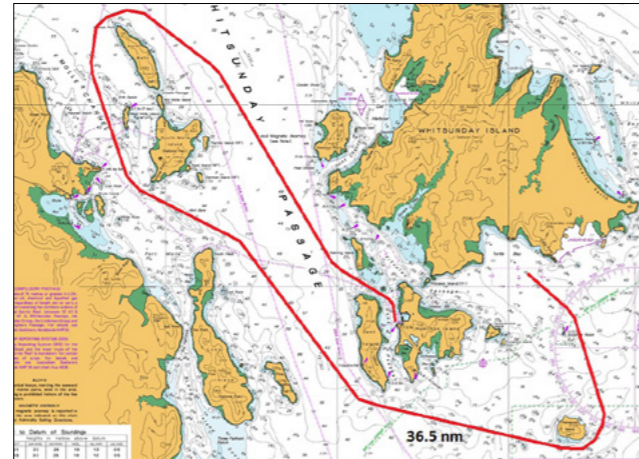
Course Mark	Required Side
Starting line	Eastern Starting Line
Laid Mark	As described in A 4
Dungurra Island*	Starboard
Dent Island	Starboard
South Molle Island	Starboard
North Molle Island	Starboard
Dent Laid Mark	Starboard
Finishing Line	Dent Passage in a southerly direction

Course 38
27.9 nm approx.



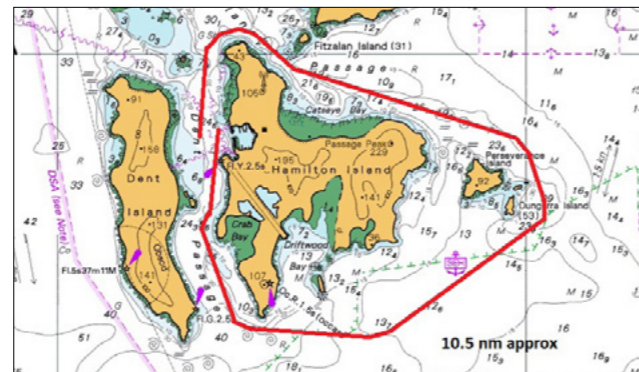
Course Mark	Required Side
Starting line	Eastern Starting Line
Laid Mark	As described in A 4
Dungurra Island*	Starboard
Dent Island	Starboard
South Molle Island	Starboard
Mid Molle Island	Starboard
Dent Laid Mark	Starboard
Finishing Line	Dent Passage in a southerly direction

Course 39
36.5 nm approx.



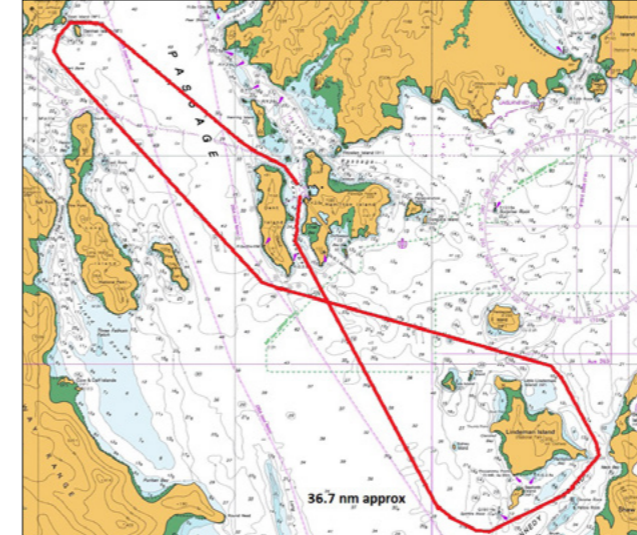
Course Mark	Required Side
Starting line	Eastern Starting Line
Laid Mark	As described in A 4
Pentecost Island	Starboard
Dent Island	Starboard
South Molle Island	Starboard
North Molle Island	Starboard
Dent Laid Mark	Starboard
Finishing Line	Dent Passage in a southerly direction

Course 40
10.5 nm approx.



Course Mark	Required Side
Starting line	Dent Passage in a northerly direction
Hamilton Island	Starboard
Fitzalan Island*	Port
Dungurra Island	Starboard
Hamilton Island	Starboard
Finishing Line	Dent Passage in a northerly direction

Course 41
36.7 nm approx.



Course Mark	Required Side
Starting line	Dent Passage in a northerly direction
Dent Island	Port
Denman Island	Port
Dent Island	Port
Lindeman Island	Starboard
Spitfire Laid Mark	Starboard
Finishing Line	Dent Passage in a northerly direction

Emergency Procedures And Communications

On Island Emergencies

From an island phone: 000

Inform operator of known relevant details and be guided by the operator. Relevant details include location of incident and number of injured persons etc. The trained operator will assess the information and notify the appropriate agency.

Off Island Emergencies

Yacht returning to Hamilton Island: 000

Inform operator of known relevant details and be guided by the operator. Relevant details include location of incident and number of injured persons etc. The operator will coordinate the most appropriate emergency response.

RETURN TO EITHER A1 OR A2 JETTY.

Important Race Week Numbers

Emergency (from landline)	000
Emergency (from mobile)	112
Marina Office	07 4946 8353
Medical Centre	07 4804 5688
Race Week Office	07 4946 8158 / 07 4946 8159
Race Week Office Enquiries	raceoffice@hamiltonisland.com.au

Local Marine Industry

Hamilton Island Shipyard/Chandlery	07 4946 8138
North Sails	0401 302 179
Airlie Sails	07 4946 1125
Hawkes Boatyard	07 4946 6700
Shute Harbour Slipway/Chandlery	07 4948 8239
Coral Sea Marina	07 4946 2400
Whitsunday Sailing Club	07 4946 6138
Abel Point Diesel Centre	07 4946 5411
Quadrant Marine Chandlery	07 4946 4033
Airlie Yachting Serv. (Hydraulics)	0404 416 614

Travel

Cruise Whitsundays	07 4846 7000
Jetstar	13 15 38
Virgin Australia	13 67 89
Qantas	13 13 13

Government

Mackay Customs	07 4965 7100
Water Police	07 4948 8888

Off Island Emergencies

Yacht not returning to Hamilton Island heading elsewhere: 000

Inform operator of known relevant details and be guided by the operator. Relevant details include location of incident and number of injured persons etc. The operator will coordinate the most appropriate emergency response.

Off Island Emergencies

Out of mobile range: VHF channel 16 or 68

Contact Hamilton Island Marina Office and inform marina staff of all known details of the incident. Marina Office staff will coordinate the most appropriate emergency response.

ALL VESSELS WITH EMERGENCIES ON BOARD ARE TO GO TO A1 AND A2 JETTIES.

Resort

Hamilton Island Resort	07 4946 9999
Hamilton Island Reservations	13 7333
Tour Desk	07 4946 8305
Reception Reef View Hotel	07 4946 9999
Reception Bungalows	07 4946 9999
Reception Beach Club	07 4946 8000
Reception Holiday Homes	07 4946 8640
Reception qualia	07 4948 9222

Resort Facilities

Resort Buggy Hire	07 4946 8263
Explore	07 4946 9664
Pharmacy	07 4946 9053
Post Office	07 4946 9462
Hamilton Island Air	07 4969 9599

HAMILTON ISLAND APP



Scan to download the Hamilton Island App, or visit the App Store or Google Play. The App is the best way to make restaurant bookings and also includes an activities calendar, transport timetables and live weather updates.



Tide Predictions

Times and heights of high and low waters August - 2023

Sunday 20		Monday 21		Tuesday 22		Wednesday 23		Thursday 24		Friday 25		Saturday 26	
Time	Height	Time	Height	Time	Height	Time	Height	Time	Height	Time	Height	Time	Height
0008	3.27	0038	3.08	0113	2.85	0159	2.58	0319	2.32	0512	2.21	0106	1.06
0628	0.89	0702	0.90	0742	0.96	0836	1.05	0952	1.12	1117	1.09	0644	2.33
1236	2.67	1322	2.67	1419	2.65	1533	2.65	1702	2.76	1826	3.02	1233	0.91
1819	1.01	1904	1.21	2006	1.42	2137	1.58	2329	1.55			1931	3.36
Sunset													
1752		1752		1752		1753		1753		1753		1753	

Tidal Flow

Sunday 20th	South until 12.36 pm then north all arvo
Monday 21st	South until 1.32 pm then north all arvo
Tuesday 22nd	South until 2.19 pm then north all arvo
Wednesday 23rd	Lay day (no tide in the resort pools)
Thursday 24th	South from 9.52 am then north from 5.02 pm
Friday 25th	South from 11.17 am then north from 6.26 pm
Saturday 26th	North from 6.44 am then south from 12.33 pm

National Jury

Australian Sailing has approved the following National Jury as appointed by Hamilton Island Yacht Club (organising authority) in accordance RRS 70.5(b).

Philippe Mazard, Chair	(IJ)	France
Richard Slater	(IJ)	NSW, Australia
Mark Gallagher	(NJ)	QLD, Australia
Mal Eaton	(NJ)	VIC, Australia

The decisions of the National Jury are not appealable in accordance with RRS 70.5

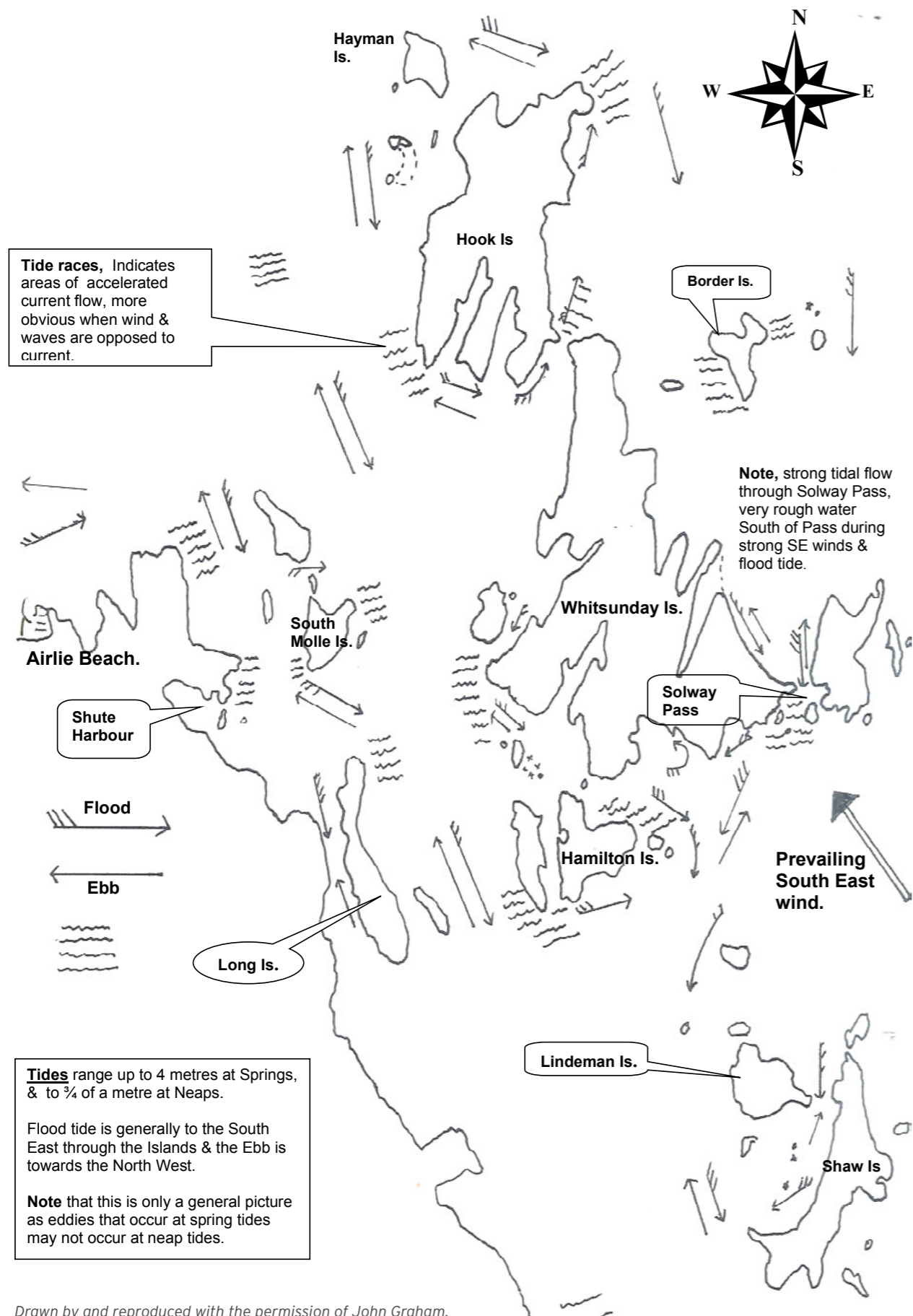
Weather

Experienced weather guru, and yachtsman, Ken Batt, will provide detailed weather information to competitors each day, which will include an overall synopsis for the race area, temperature and sea conditions, a detailed wind forecast and outlooks for the days ahead. Call down to the Race Office at Hamilton Island Yacht Club each morning to collect your copy.

Management Team

Denis Thompson (IRO)	Regatta Director
Steve Kidson (NRO)	Race Officer
Greg Sinclair (NRO)	Race Officer
Jenni Birdsall	Timing/Computer
Richard Slater (IJ, IU) NSW	Jury Chairman
Philippe Mazard (IJ, NU) FRA	Jury
Mark Gallagher (NJ) QLD	Jury
Mal Eaton (NJ) VIC	Jury
Elaine Fowler (NRO)	Timer
Brian McMahon	Pin Mark
Geoff Campbell	Marks
Michael Spies	Handicapper/Trophies
Matthew Dickinson	Marks
Sharon Henwood	Office
Roger Wragby	Office/Signals
Mark Dingley (NRO)	Marks
Ted Anderson (NRO)	Marks
Jack Buchan (NRO)	Marks
Nick Campbell	Marks
Paul Borel	Marks
Kylie Flemming	Signals/Scribe

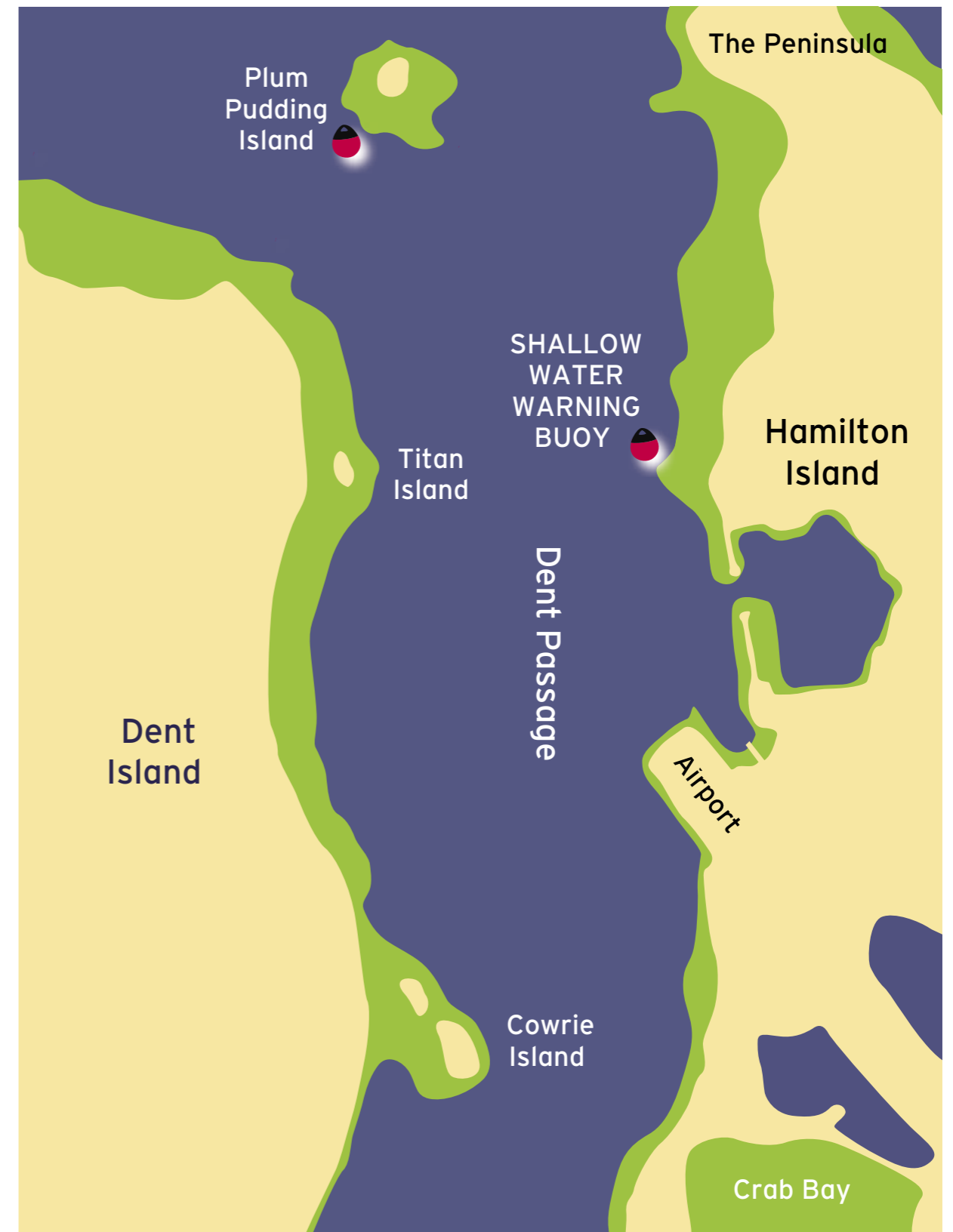
Whitsunday Tidal Flow Chart



Drawn by and reproduced with the permission of John Graham.

Shallow Water Warning Buoy

Red round buoys may be laid to mark shallow areas of Dent Passage. These buoys are not marks of any course and are only intended to remind yachts that there is shallow water in the vicinity.



Department of Transport and Main Roads - Maritime Safety Queensland

NOTICE TO MARINERS

157 of 2019



Issued by Mackay Maritime Region on 9 April 2019

- Area:** Whitsundays pilotage area
- Locality:** Dent Passage off Hamilton Island airport runway
- Activity:** Flight path caution to vessels

Mariners are advised that vessels transiting Dent Passage off the western end of the Hamilton Island airport runway in the vicinity of approximate position Latitude 20°20.8'S, Longitude 148°56.5'E are cautioned about frequent day and night aircraft movements. Vessels with an overall height greater than eight (8) metres are advised to keep clear of the flight path zone during aircraft movements. The attached chartlet (Map S11-41-2 dated 8 April 2019) details 'distance from runway' and 'mast height' restricted areas.

Refer to notice: 977 of 2010
 Cancel notice: 977 of 2010

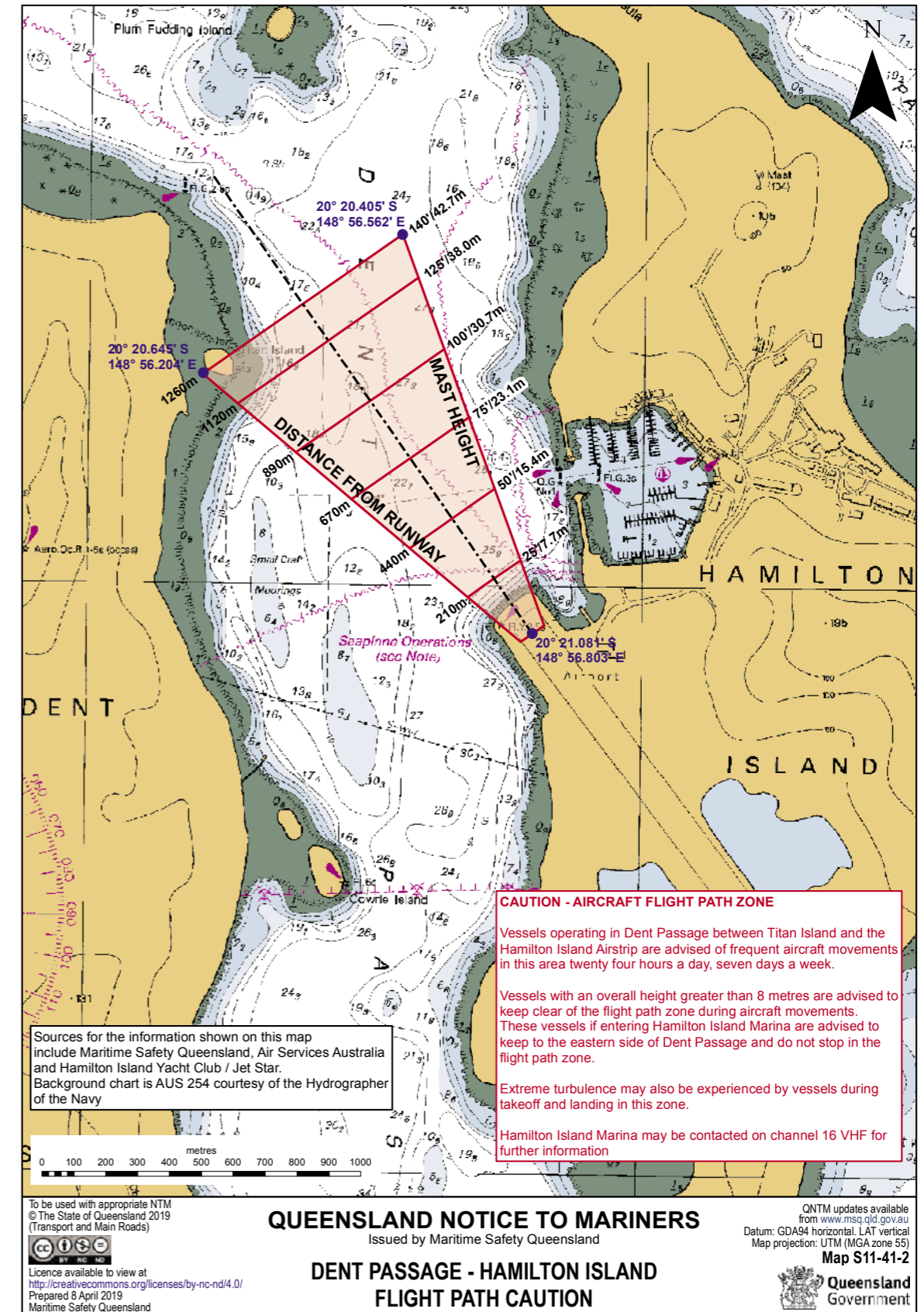
AUS charts affected: 252, 253, 254

Latitude and longitude positions are on WGS84 horizontal datum and are compatible with GDA94 datum.

For further information about this notice, please contact:

The Mackay Regional Harbour Master's office:
 Phone 07 4944 3700 Email: vtshaypoint@msq.qld.gov.au

Notice authorised by: Regional Harbour Master (Mackay) - Maritime Safety Queensland



Sailors Please Be Aware of Media Crafts

During Race Week this year there will be a number of media following the racing both from the water and from the air.

The skippers of the media boats and the pilots of the helicopters will make every effort to make sure they do not interfere with the racing as much as they can. However there may be occasions when they find themselves in a position where the wake from a boat or the down wash from the rotors of the helicopters may briefly affect the racing yachts.

This is sometimes unavoidable and we ask you to understand that they are trying to get the best shots for the media exposure the regatta deserves.

Thank you for your consideration in this matter, we appreciate your help.

Aircraft are Hazardous to Yachts

Have you ever sailed in the dirty air from another boat? Try sailing in the dirty air from an Aircraft. Wake turbulence generated from the wind of an aircraft can cause sudden and violent wind changes (up to 80 feet/sec), possibly resulting in equipment damages or injuries.

Vortices have enough energy to create multiple whirlwinds lifting water from the surface. Vortices can exist for in excess of 3 minutes.

Jet blast from the aircraft engines can also be dangerous. Full power is required for take off on Hamilton Island's short runway. The Airbus A320 produces 26,500 lbs of thrust per engine. The thrust can carry aft of the engine for at least 1150'/348m where the wind gusts will be in excess of 40 knots.

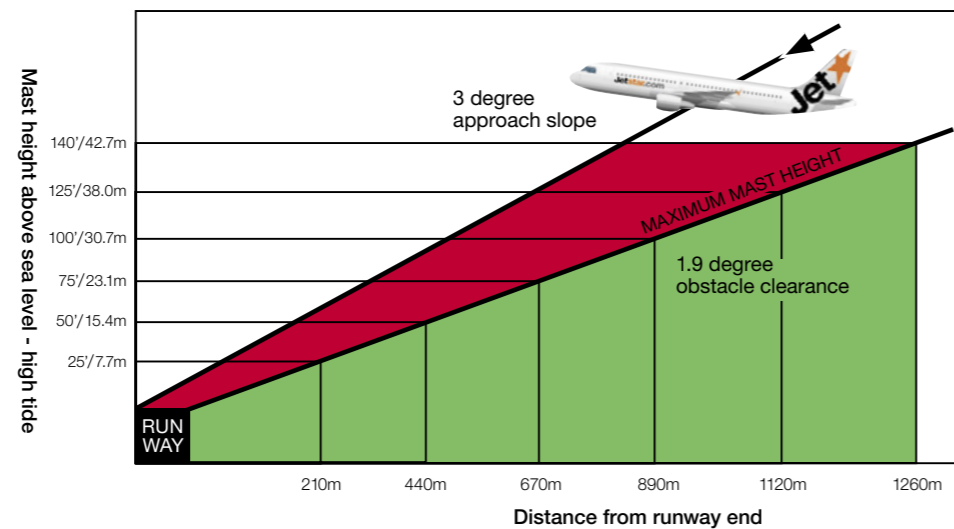
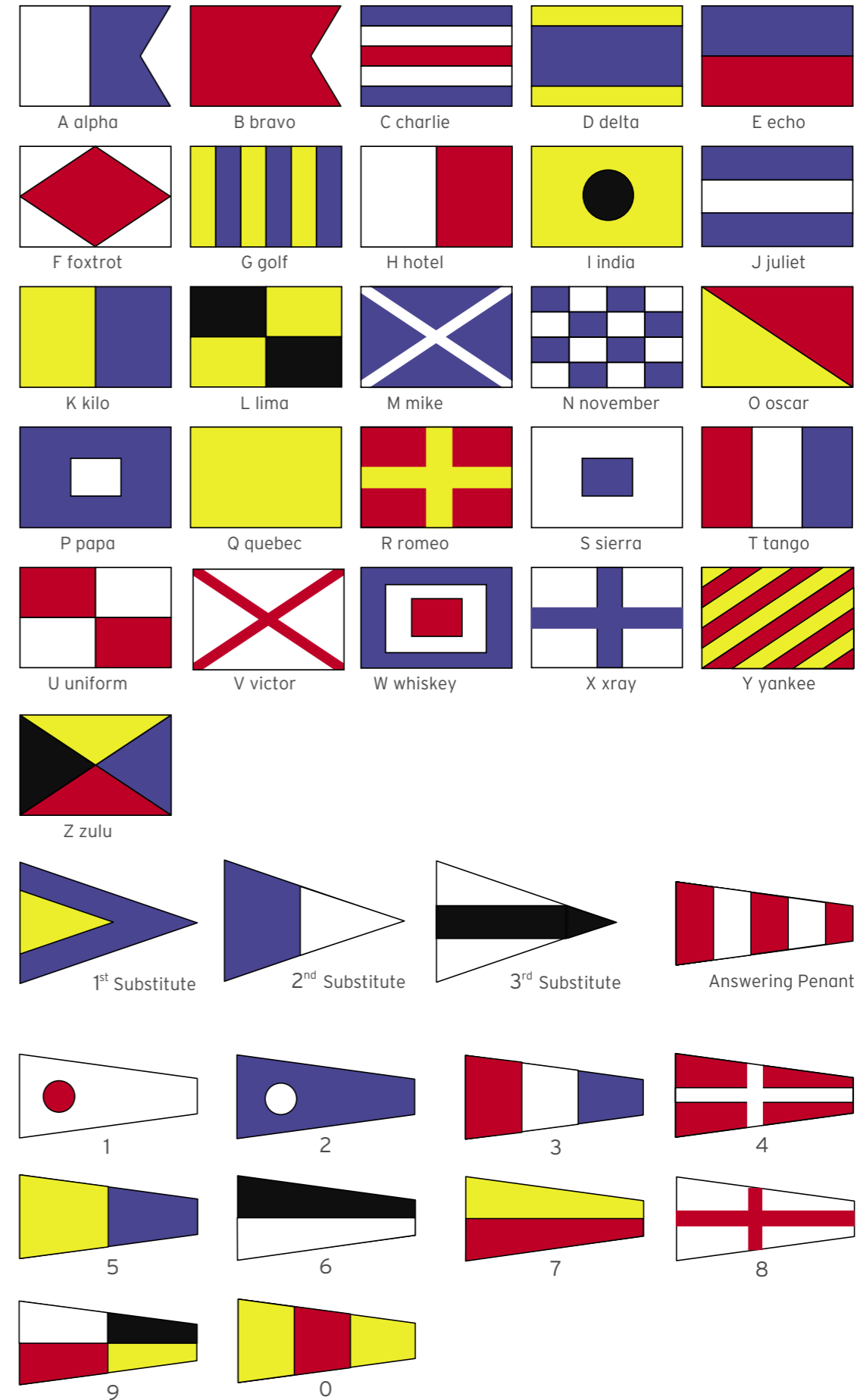
Yachts are Hazardous to Aircraft

During landing, a Jetstar, Airbus A320 Aircraft can weigh up to 66,000kg and travels at an airspeed of 140 knots. Our normal approach path is a 3-degree slope. For Jetstar to have the required obstacle clearance above your mast, plot your mast height against the required distance from the runway.

Conducting a missed approach can present a dangerous situation. A jet aircraft can take up to 6 seconds to start climbing. During this time it will travel over 1400 feet (431 metres) and descend about 50 feet.

Mast height (feet)	Height (metres)	Distance out from runway
30	9.1	250m
40	12.1	340m
50	15.4	440m
60	18.4	530m
70	21.4	620m
80	24.4	710m
90	27.4	800m
100	30.7	890m
110	33.7	990m
120	36.7	1080m
130	39.7	1170m
140	42.7	1260m

Every boat has a different limit. When sailing the Dent Passage, ensure the runway approach path is clear. Check your mast height against the table and know your distance limit before you sail out.





TOURISM
& EVENTS
Queensland

PASPALLEY



MECCA COSMETICA

Tanqueray
LONDON DRY GIN



HAHN



AVPartners®